



Price
£950,000

Freehold

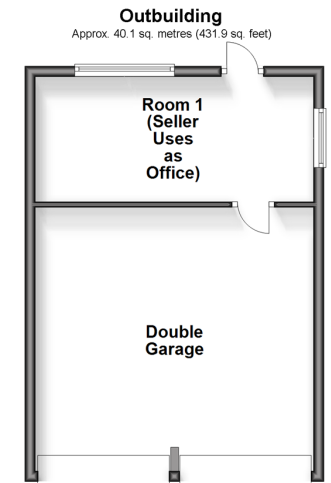
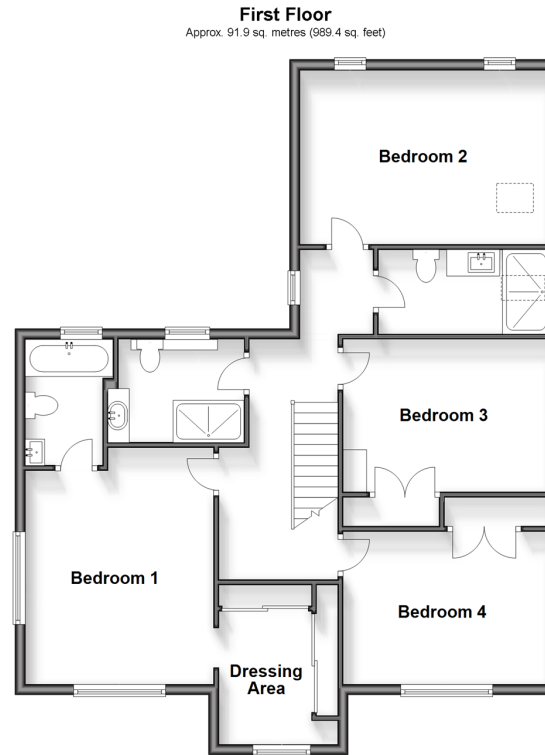
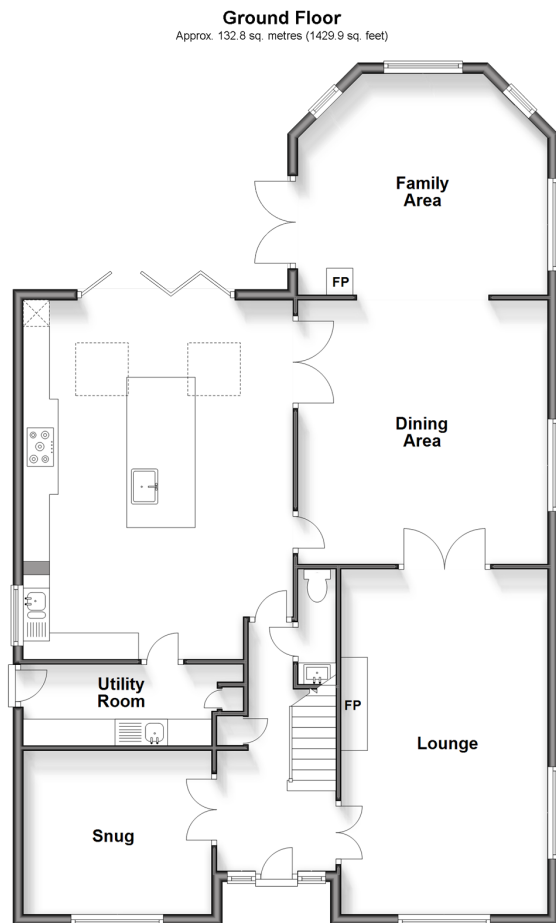
4x  3x  4x 

**Stonehill, Sellindge,
Ashford, Kent, TN25**

OVER 60?

Secure this property
for up to **59% less!**

Wards
Helping you move forwards



Accommodation

GROUND FLOOR

Entrance Hall

Lounge: 21'4" x 12'9" (6.51m x 3.89m)

Cloakroom

Snug: 11'7" x 10'4" (3.53m x 3.15m)

Dining Area: 16'4" x 15'6" (4.98m x 4.73m)

Family Area: 15'5" x 13'8" (4.70m x 4.17m)

Kitchen: 23'1" x 17'0" (7.04m x 5.19m)

Utility Room: 14'0" x 5'0" (4.27m x 1.53m)

FIRST FLOOR

Landing

Bedroom 1: 14'8" x 11'8" (4.47m x 3.56m)

En-Suite Bathroom: 7'8" x 4'7" (2.34m x 1.40m)

Dressing Area: 8'9" x 7'10" (2.67m x 2.39m)

Bedroom 2: 15'6" x 10'5" (4.73m x 3.18m)

Bedroom 3: 12'10" x 9'6" (3.91m x 2.90m)

Bedroom 4: 12'10" x 9'5" (3.91m x 2.87m)

Shower Room 1: 7'8" x 6'3" (2.34m x 1.91m)

Shower Room 2: 10'7" x 5'3" (3.23m x 1.60m)

OUTSIDE

Off Road Parking

Double Garage: 17'4" x 16'7" (5.29m x 5.06m)

Room 1 (Seller uses as Office): 17'3" x 7'8" (5.26m x 2.34m)

Front & Rear Gardens

Swimming Pool

Hot Tub



Main features

- Beautiful large extended home with a new heated swimming pool
- 4 double bedrooms, en-suite bathroom and 2 shower rooms
- Stunning, generous kitchen with stone worktops, large lounge and dining area
- Family area and snug with a log burner
- Secluded rear garden, double garage with a separate room use as an office



Nearest Schools

Primary Schools: Sellindge Primary 0.7 miles, Smeeth Community Primary 2.2 miles, Brabourne C of E Primary 2.5 miles
Secondary Schools: The Norton Knatchbull School 5.5 miles, The North School 5.8 miles



Transport Information

Train Stations: Westenhanger 3.7 miles, Sandling 5.3 miles, Folkestone West High Speed Link 9.3 miles



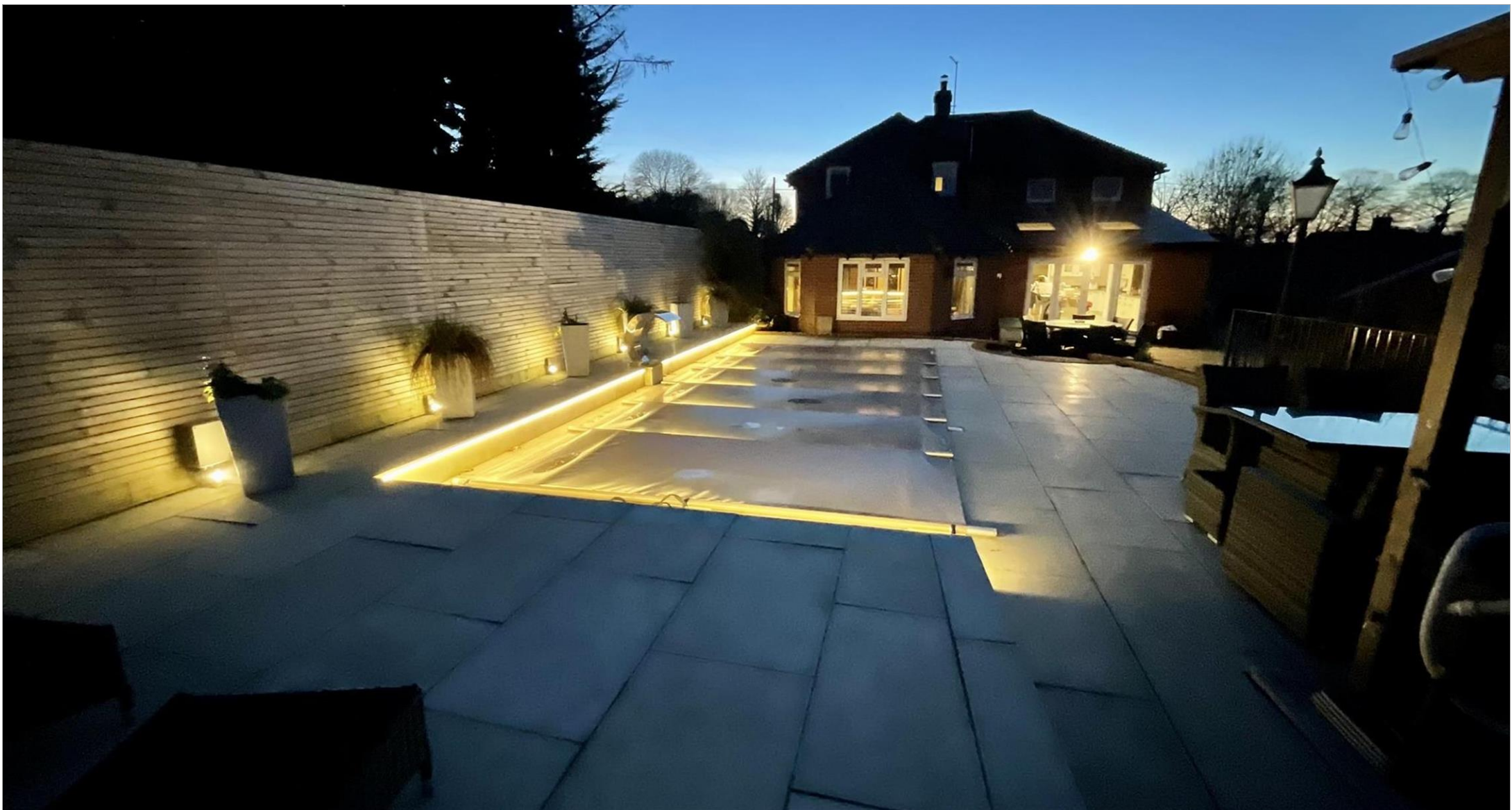
Address

Stonehill, Sellindge, Ashford, Kent, TN25



Directions

For directions to this property please contact us.



Wards
Helping you move forwards

Call Hythe Branch 01303 267473 ■ wardsofkent.co.uk



■ Legal advice should be taken to verify fixtures/fittings, planning, alterations and/or lease details ■ Appliances & services are untested, dimensions are approximate and floor plans are not to scale
■ Through a Homewise Home For Life Plan people aged 60+ can secure this property for up to 59% less, by purchasing a Lifetime Lease.



12824656/20240129/MEL/MB