



Price
£210,000

Leasehold

2x  1x  2x 

**High Street, Hythe,
Kent, CT21**

OVER 60?

Secure this property
for up to **59% less!**

Wards
Helping you move forwards



Main features

- First floor grade II listed duplex apartment
- No onward chain
- Lounge and dining area, loft room perfect for a study
- Electric storage heaters, long lease
- Central Hythe location with everything is on your doorstep

Accommodation

FIRST FLOOR

Entrance Hall
Lounge: 13'3 x 10'9 (4.04m x 3.28m)
Kitchen: 10'9 x 8'6 (3.28m x 2.59m)
Dining Area: 10'0 x 9'4 (3.05m x 2.85m)
Shower Room

SECOND FLOOR

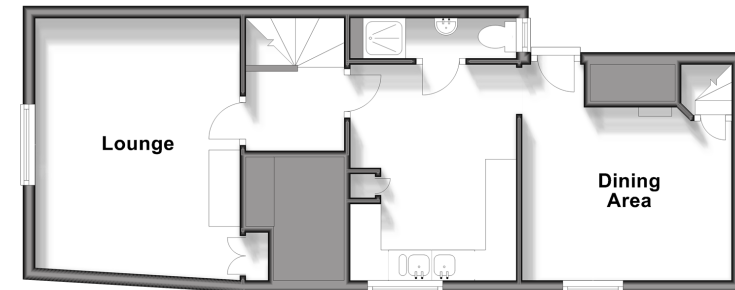
Landing
Bedroom 1: 13'8 x 12'4 (4.17m x 3.76m)
Bedroom 2: 15'0 x 9'10 (4.58m x 3.00m)
Loft Room: 10'0 x 5'4 (3.05m x 1.63m)

OUTSIDE

Communal Courtyard

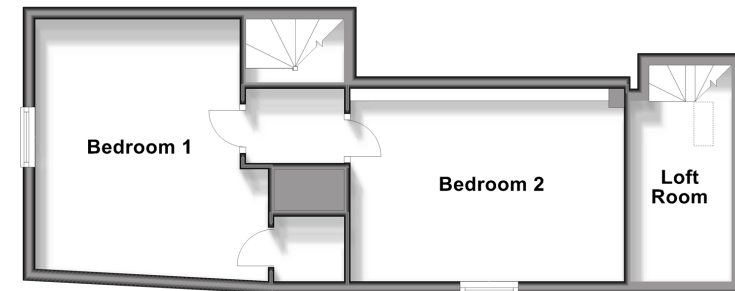
First Floor

Approx. 45.7 sq. metres (492.2 sq. feet)



Second Floor

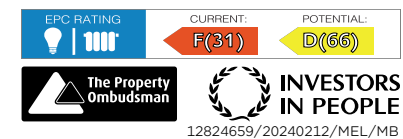
Approx. 41.6 sq. metres (447.6 sq. feet)



Call Hythe - 01303 267473 ■ wardsof Kent.co.uk

- If buying to let, the energy rating will need to be improved to at least 'E' rating before you can let the property
- Appliances & services are untested, dimensions are approximate and floor plans are not to scale

- Legal advice should be taken to verify fixtures/fittings, planning, alterations and/or lease details
- Through a Homewise Home For Life Plan people aged 60+ can secure this property for up to 59% less, by purchasing a Lifetime Lease.



12824659/20240212/MEL/MB