



Price
£495,000

Freehold

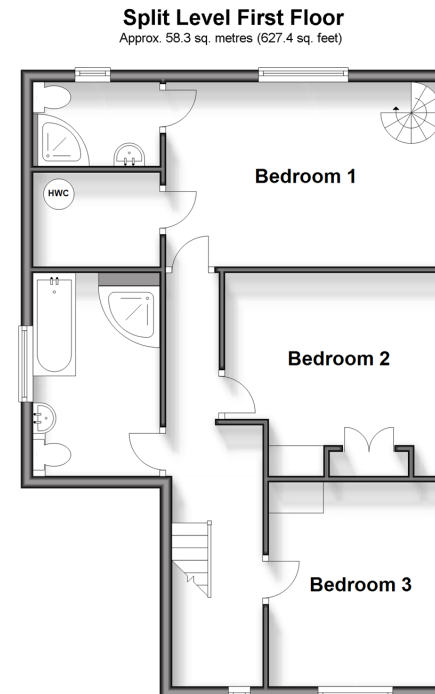
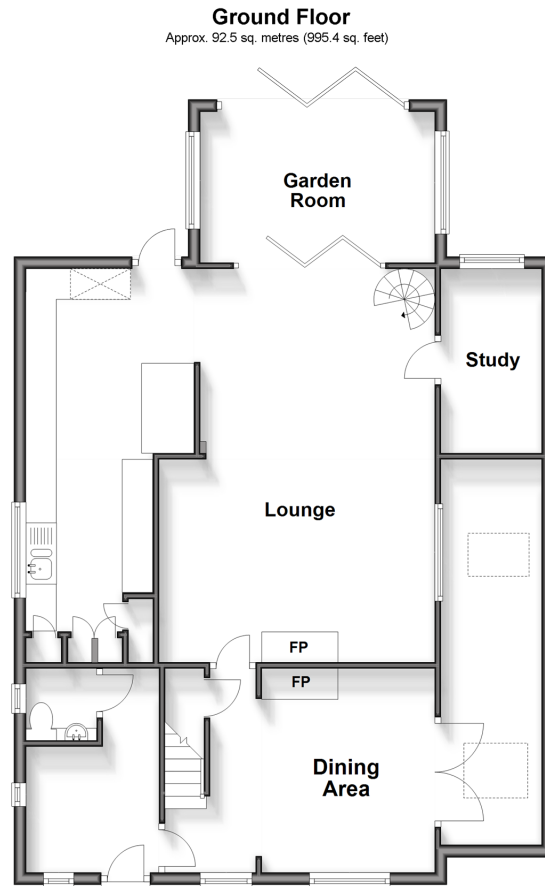
3x  2x  3x 

**Hythe Road, Dymchurch,
Romney Marsh, Kent,
TN29**

OVER 60?

Secure this property
for up to **59% less!**

Wards
Helping you move forwards



Accommodation

GROUND FLOOR

Entrance Hall
Kitchen: 21'3 x 8'7 (6.48m x 2.62m)
Lounge: 22'1 x 12'9 (6.74m x 3.89m)
Garden Room: 12'7 x 8'0 (3.84m x 2.44m)
Study: 9'10 x 4'8 (3.00m x 1.42m)
Dining Area: 14'10 x 10'11 (4.52m x 3.33m)
Library: 20'10 x 4'8 (6.35m x 1.42m)
Cloakroom

SPLIT LEVEL FIRST FLOOR

Landing
Bedroom 1: 14'10 x 10'1 (4.52m x 3.08m)
En-Suite Shower Room: 6'9 x 4'5 (2.06m x 1.35m)
Walk-In Wardrobe
Bedroom 2: 11'7 x 9'8 (3.53m x 2.95m)
Bedroom 3: 11'0 x 9'5 (3.36m x 2.87m)
Bathroom: 10'9 x 6'9 (3.28m x 2.06m)

OUTSIDE

Off Road Parking
Car Port
Front & Rear Gardens
Workshop: 8'5 x 5'9 (2.57m x 1.75m) plus 3'1 x 4'2 (0.94m x 1.27m)
Sauna/Bar: 15'3 x 8'4 (4.65m x 2.54m)
Jacuzzi: 9'0 x 8'10 (2.75m x 2.69m)



Main features

- Spacious family home with only a short walk to the local beach
- Lounge and dining area with solid fuel burners in addition to a study and a library
- Bedroom 1 with vaulted ceiling and en-suite shower room
- Large outbuilding comprising of workshop, bar and sauna area and covered veranda with jacuzzi
- Solar panels to assist with electric bills



Nearest Schools

Primary Schools: Dymchurch Primary 0.3 miles, Palmarsh Primary 3.4 miles

Secondary Schools: Marsh Academy 4.2 miles, Brockhill Park Performing Arts College 5.7 miles



Transport Information

Train Stations: Sandling 6.0 miles, Westenhanger 7.3 miles, Folkestone Central 8.1 miles



Address

Hythe Road, Dymchurch, Romney Marsh, Kent, TN29



Directions

For directions to this property please contact us.



Wards
Helping you move forwards

Call Hythe Branch 01303 267473 ■ wardsofkent.co.uk



■ Legal advice should be taken to verify fixtures/fittings, planning, alterations and/or lease details ■ Appliances & services are untested, dimensions are approximate and floor plans are not to scale
■ Through a Homewise Home For Life Plan people aged 60+ can secure this property for up to 59% less, by purchasing a Lifetime Lease.

