



Guide Price
£110,000

Leasehold

1x  1x  1x 

**Blythe Court, Prospect
Road, Hythe, Kent, CT21**

Wards
Helping you move forwards



Main features

- No onward chain
- Bright, sunny aspect apartment
- Good sized kitchen, bedroom with built-in wardrobes
- Communal laundry, lodge manager
- Short walk to Waitrose and the High Street

Accommodation

FIRST FLOOR

Entrance Hall

Lounge: 14'5 x 10'8 (4.40m x 3.25m)

Kitchen: 7'10 x 7'7 (2.39m x 2.31m)

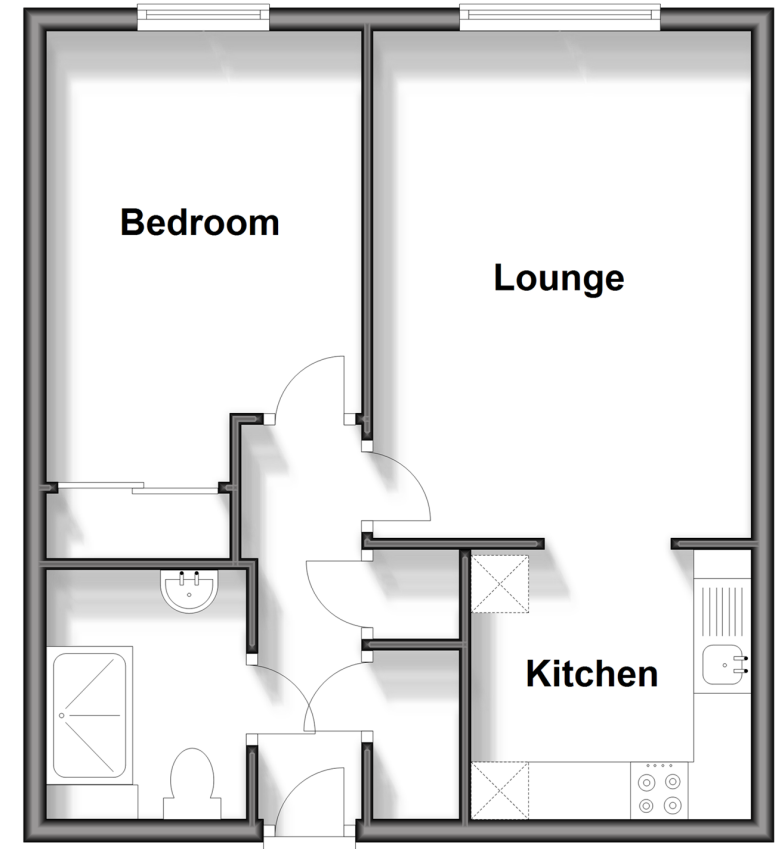
Shower Room: 7'1 x 5'7 (2.16m x 1.70m)

OUTSIDE

Communal Car Park

First Floor

Approx. 42.2 sq. metres (453.9 sq. feet)



Call Hythe - 01303 267473 ■ wardsofkent.co.uk

- Legal advice should be taken to verify fixtures/fittings, planning, alterations and/or lease details
- Appliances & services are untested, dimensions are approximate and floor plans are not to scale



12824667/20240424/CDH/MB