



Price

£120,000

Leasehold

2x  1x  1x 

**Prince Of Wales Park,
Burmarsh Road, Hythe,
Kent, CT21**

Wards
Helping you move forwards



Main features

- **Quiet residential site for over 55s**
No onward chain
- **Large lounge and dining area,**
spacious kitchen
- **Generous plot, communal car**
park
- **Short walk to the bus stop**
- **Affordable detached home**

Accommodation

GROUND FLOOR

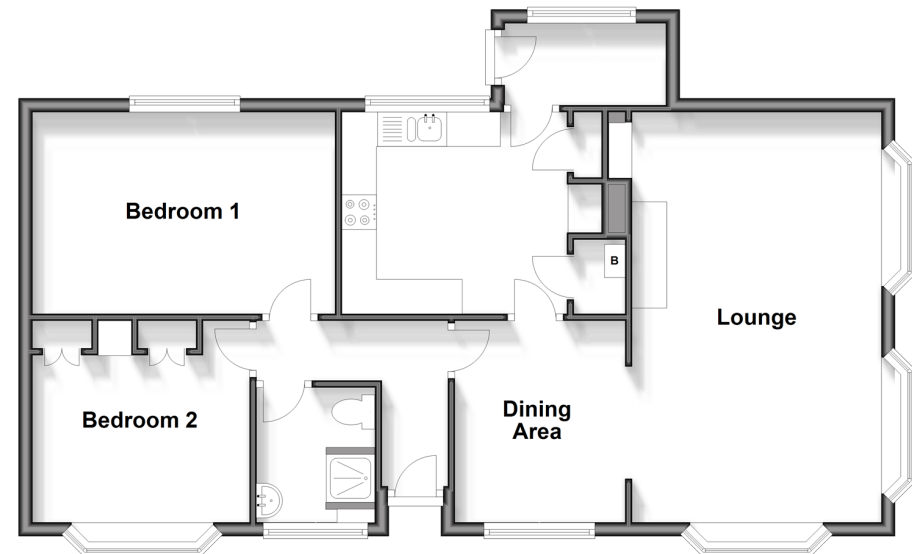
Entrance Hall
 Lounge: 19'7 x 11'8 (5.97m x 3.56m)
 Dining Area: 9'9 x 7'10 (2.97m x 2.39m)
 Kitchen: 16'6 x 9'6 (5.03m x 2.90m)
 Bedroom 1: 14'4 x 9'6 (4.37m x 2.90m)
 Bedroom 2: 10'2 x 9'8 (3.10m x 2.95m)
 Shower Room: 6'5 x 5'6 (1.96m x 1.68m)
 Rear Porch

OUTSIDE

Garden
 Communal Car Park

Ground Floor

Approx. 76.3 sq. metres (821.2 sq. feet)



Call Hythe - 01303 267473 ■ wardsofKent.co.uk

- If buying to let, the energy rating will need to be improved to at least 'E' rating before you can let the property
- Appliances & services are untested, dimensions are approximate and floor plans are not to scale

■ Legal advice should be taken to verify fixtures/fittings, planning, alterations and/or lease details



12824672/20240212/DC/MB