



**Guide Price**  
**£100,000**

**Leasehold**

1x  1x  1x 

**Blythe Court, Prospect  
Road, Hythe, Kent, CT21**

*Wards*  
Helping you move forwards





## Main features

- No onward chain
- Bright dual aspect windows in the lounge, good sized kitchen
- Bedroom with built in wardrobes
- Communal laundry, lodge manager
- Short walk to Waitrose and the High Street with its many independent shops and cafes

## Accommodation

### SECOND FLOOR

Entrance Hall

Lounge/Diner: 16'0 x 12'2 (4.88m x 3.71m)

Bedroom: 12'9 x 9'5 (3.89m x 2.87m)

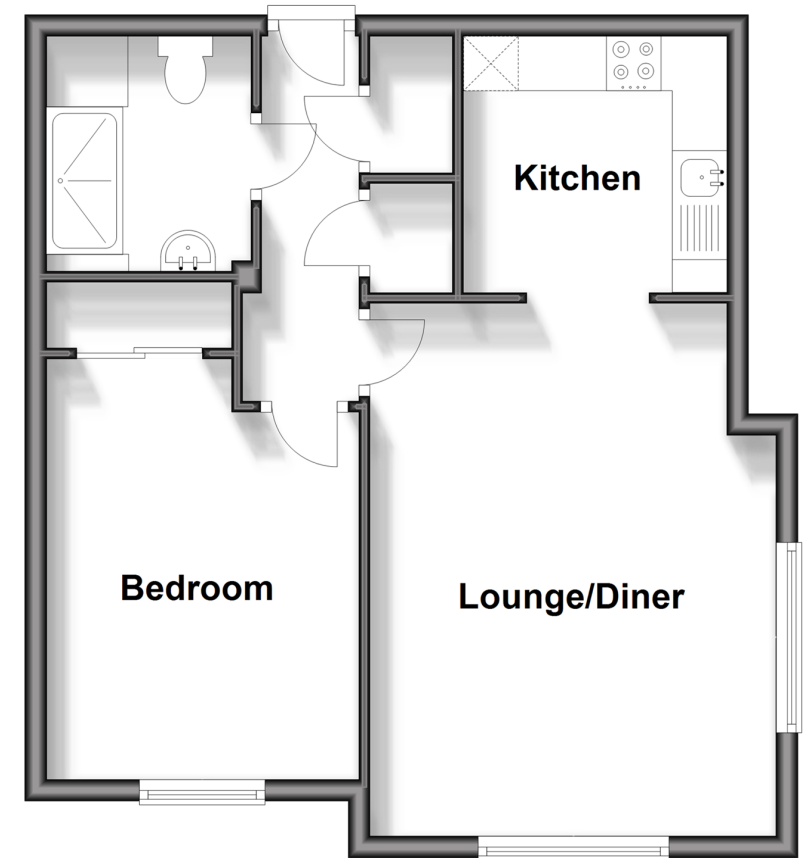
Shower Room: 7'1 x 6'1 (2.16m x 1.86m)

### OUTSIDE

Communal Car Park

## Second Floor

Approx. 45.8 sq. metres (493.4 sq. feet)



**Call Hythe - 01303 267473 ■ [wardsofken.co.uk](http://wardsofken.co.uk)**

- Legal advice should be taken to verify fixtures/fittings, planning, alterations and/or lease details
- Appliances & services are untested, dimensions are approximate and floor plans are not to scale



12824675/20240502/MB/MB