



**OVER 60?**

Secure this property  
for up to **59% less!**

**Price**

**£255,000**

**Leasehold**

2x  1x  1x 

**Orchard Valley, Hythe,  
Kent, CT21**

*Wards*  
Helping you move forwards





## Main features

- Refurbished first floor apartment
- Stunning open plan lounge and kitchen
- Re-fitted kitchen and bathroom, new flooring and boiler
- Secluded garden divided between the two apartments
- Large storage area, access to the loft
- No onward chain

## Accommodation

### FIRST FLOOR

#### Entrance Hall

Lounge: 14'6 (4.42m) x 10'9 (3.28m) narrowing to 9'7 (2.92m)

Kitchen: 8'8 x 7'3 (2.64m x 2.21m)

Bedroom 1: 11'10 x 10'9 (3.61m x 3.28m)

Bedroom 2: 8'3 x 7'1 (2.52m x 2.16m)

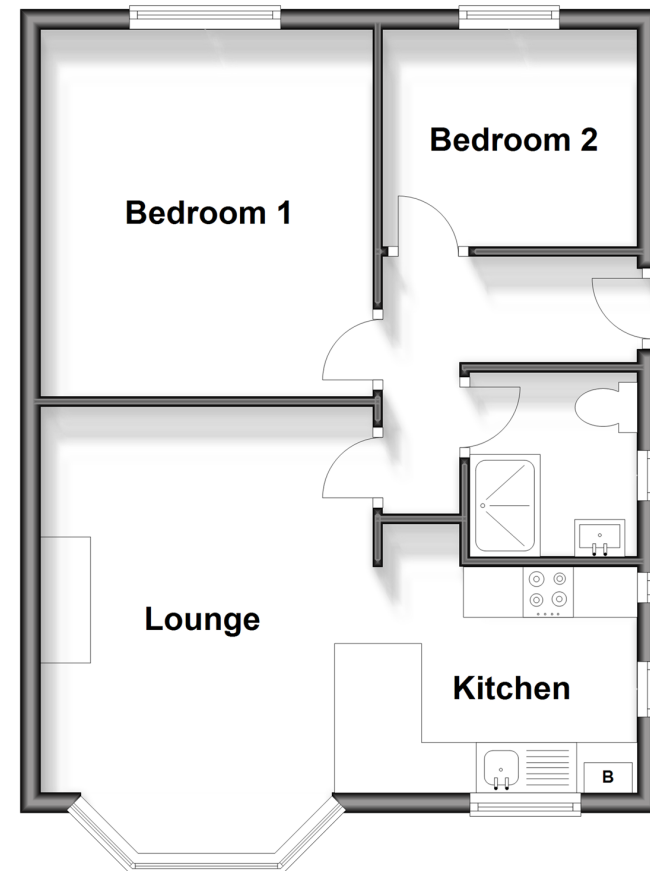
Shower Room: 5'9 x 5'4 (1.75m x 1.63m)

### OUTSIDE

#### Rear Garden

## First Floor

Approx. 45.4 sq. metres (489.2 sq. feet)



**Call Hythe - 01303 267473 ■ [wardsofkent.co.uk](http://wardsofkent.co.uk)**

- Legal advice should be taken to verify fixtures/fittings, planning, alterations and/or lease details
- Appliances & services are untested, dimensions are approximate and floor plans are not to scale
- Through a Homewise Home For Life Plan people aged 60+ can secure this property for up to 59% less, by purchasing a Lifetime Lease.

