



OVER 60?

Secure this property
for up to **59% less!**

Guide Price
£375,000

Freehold

3x  2x  1x 

**Quarry Way, Martello
Lakes, Hythe, Kent,
CT21**

Wards
Helping you move forwards



Main features

- Town house built in 2016
- Uninterrupted far reaching sea views from the upper floors
- NHBC warranty until 2026
- Study could be used as a bedroom, barn style car port and allocated parking space
- Short drive to Hythe town centre and sandy beach at Dymchurch

Accommodation

GROUND FLOOR

Entrance Hall
 Study: 9'3 x 6'2 (2.82m x 1.88m)
 Cloakroom
 Kitchen/Dining Room: 10'1 x 6'3 (3.08m x 1.91m)
 plus 12'11 x 12'10 (3.94m x 3.91m)

FIRST FLOOR

Landing
 Bedroom 1: 12'9 x 10'0 (3.89m x 3.05m)
 En-Suite Shower Room
 Lounge: 12'0 (3.66m) x 11'9 (3.58m) narrowing to 10'2 (3.10m)

SECOND FLOOR

Landing
 Bedroom 2: 12'7 x 10'0 (3.84m x 3.05m)
 Bedroom 3: 12'9 x 9'6 (3.89m x 2.90m)
 Bathroom

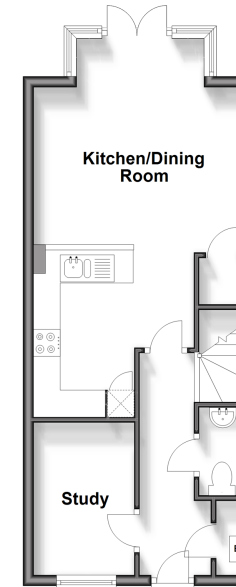
OUTSIDE

Car Port
 Allocated Parking Space
 Front & Rear Gardens

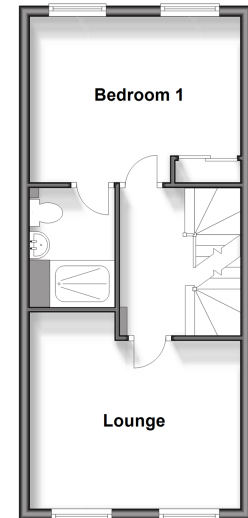
Call Hythe - 01303 267473 ■ wardsof Kent.co.uk

- Legal advice should be taken to verify fixtures/fittings, planning, alterations and/or lease details
- Appliances & services are untested, dimensions are approximate and floor plans are not to scale
- Through a Homewise Home For Life Plan people aged 60+ can secure this property for up to 59% less, by purchasing a Lifetime Lease.

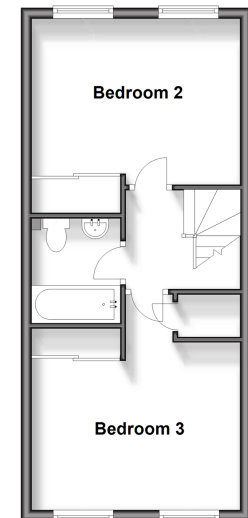
Ground Floor
 Approx. 38.1 sq. metres (409.8 sq. feet)



First Floor
 Approx. 36.0 sq. metres (387.7 sq. feet)



Second Floor
 Approx. 35.7 sq. metres (383.8 sq. feet)



12824704/20240422/DC/MB