



Price
£300,000

Freehold

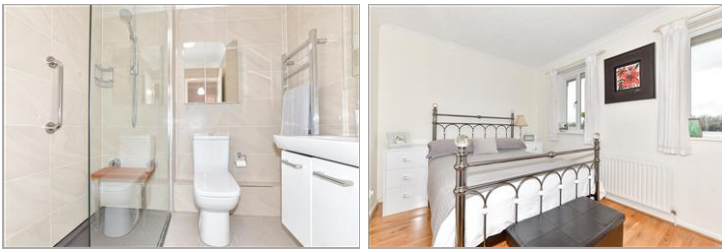
2x  2x  1x 

**Peregrine Close, Hythe,
Kent, CT21**

OVER 60?

Secure this property
for up to **59% less!**

Wards
Helping you move forwards



Main features

- This Lovely home is close to the bus stop and the canal
- Re-fitted kitchen and shower room with a large walk in shower
- Generous lounge with door opening into sunny aspect garden
- No onward chain
- Short drive to the beach

Accommodation

GROUND FLOOR

Entrance Hall

Lounge: 18'1 x 13'6 (5.52m x 4.12m)

Kitchen: 9'6 x 7'3 (2.90m x 2.21m)

FIRST FLOOR

Landing

Bedroom 1: 13'5 (4.09m) x 11'3 (3.43m) narrowing to 8'6 (2.59m)

En-Suite Shower Room: 7'8 x 3'6 (2.34m x 1.07m)

Bedroom 2: 13'4 x 8'4 (4.07m x 2.54m)

Bathroom: 7'0 x 6'7 (2.14m x 2.01m)

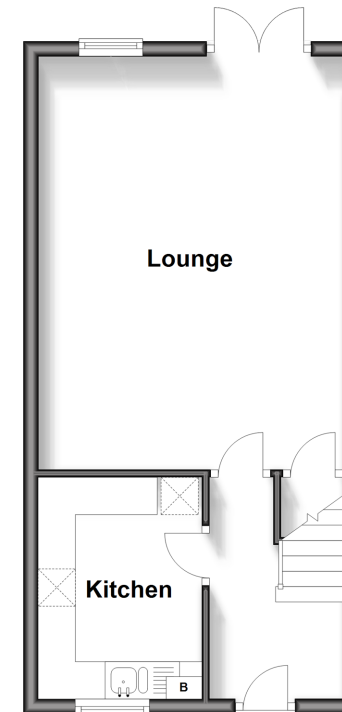
OUTSIDE

Front & Rear Gardens

Off Road Parking

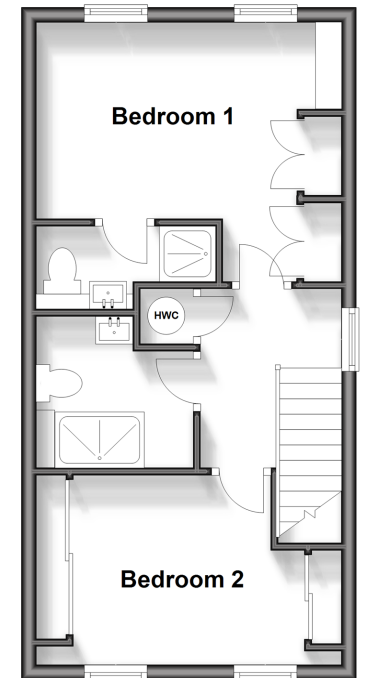
Ground Floor

Approx. 35.4 sq. metres (381.4 sq. feet)



First Floor

Approx. 35.4 sq. metres (381.4 sq. feet)



Call Hythe - 01303 267473 ■ wardsofkent.co.uk

- If buying to let, the energy rating will need to be improved to at least 'E' rating before you can let the property
- Legal advice should be taken to verify fixtures/fittings, planning, alterations and/or lease details
- Appliances & services are untested, dimensions are approximate and floor plans are not to scale
- Through a Homewise Home For Life Plan people aged 60+ can secure this property for up to 59% less, by purchasing a Lifetime Lease.



12824755/20240427/MMJ/MB