



Guide Price
£175,000

Leasehold

1x  1x  1x 

**Clearway, Addington,
West Malling, Kent,
ME19**

OVER 60?

Secure this property
for up to **59% less!**

Wards
Helping you move forwards



Main features

- A chain free beautifully appointed garden apartment
- Large secluded southerly facing private garden
- Well appointed & spacious accommodation
- Conservatory & converted summerhouse bar
- No forward chain - Cash buyers only!

Accommodation

GROUND FLOOR

Entrance Hall

Lounge: 18'8 x 12'7 (5.69m x 3.84m)

Kitchen: 9'3 x 8'10 (2.82m x 2.69m)

Bedroom : 9'5 x 9'0 (2.87m x 2.75m)

Shower Room

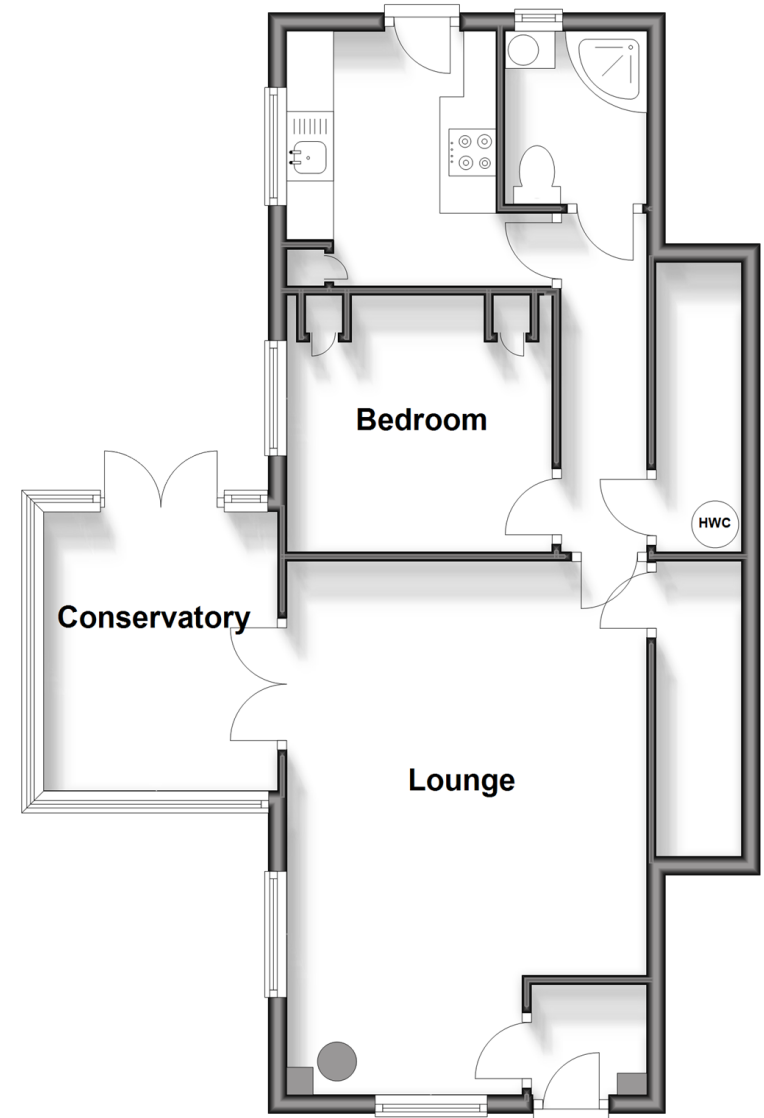
OUTSIDE

Rear Garden

Driveway For 3 Cars

Ground Floor

Approx. 57.6 sq. metres (620.0 sq. feet)



Call Kings Hill - 01732 222211 ■ wardsofkent.co.uk

- Legal advice should be taken to verify fixtures/fittings, planning, alterations and/or lease details
- Appliances & services are untested, dimensions are approximate and floor plans are not to scale
- Through a Homewise Home For Life Plan people aged 60+ can secure this property for up to 59% less, by purchasing a Lifetime Lease.



12920916/20240215/1A/NR