



OVER 60?

Secure this property
for up to **59% less!**

Price

£280,000

Freehold

2x  1x  1x 

**Ditton Place, Ditton,
Aylesford, Kent, ME20**

Wards
Helping you move forwards



Main features

- Modern home with a pleasant green view to the front
- Lovely quiet setting with pretty stream close by
- The rear garden is perfect for afternoon sun & barbecues
- Handy allocated parking
- Excellent amenities close by & lovely country walks from your door

Accommodation

GROUND FLOOR

Entrance Hall

Kitchen: 9'8 x 8'2 (2.95m x 2.49m)

Lounge: 12'8 (3.86m) x 11'6 (3.51m) narrowing to 8'2 (2.49m)

FIRST FLOOR

Landing

Bedroom 1: 11'6 into fitted wardrobes x 8'1 (3.51m x 2.47m)

Bedroom 2: 9'5 (2.87m) narrowing to 8'2 (2.49m) x 7'9 (2.36m)

Bathroom

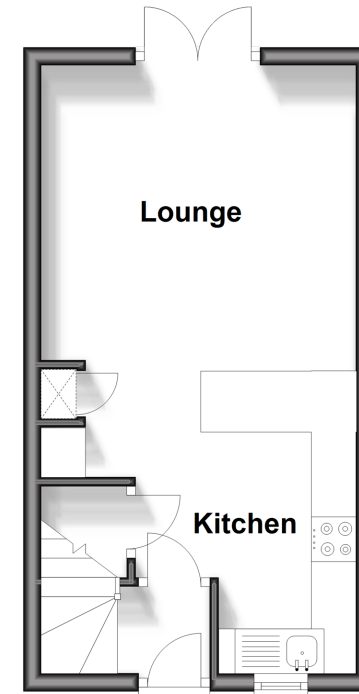
OUTSIDE

Front & Rear Gardens

Allocated Parking

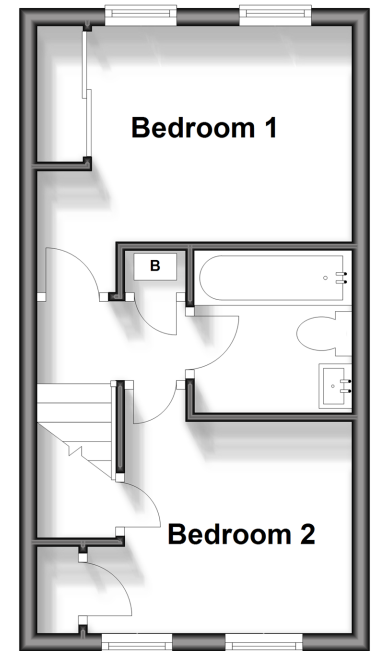
Ground Floor

Approx. 24.0 sq. metres (258.8 sq. feet)



First Floor

Approx. 24.0 sq. metres (258.8 sq. feet)



Call Larkfield - 01732 847877 ■ wardsofkent.co.uk

- Legal advice should be taken to verify fixtures/fittings, planning, alterations and/or lease details
- Appliances & services are untested, dimensions are approximate and floor plans are not to scale
- Through a Homewise Home For Life Plan people aged 60+ can secure this property for up to 59% less, by purchasing a Lifetime Lease.



12921083/20240408/AM/RT