



Price
£330,000

Freehold

3x  2x  1x 

**Sassoon Close,
Larkfield, Aylesford,
Kent, ME20**

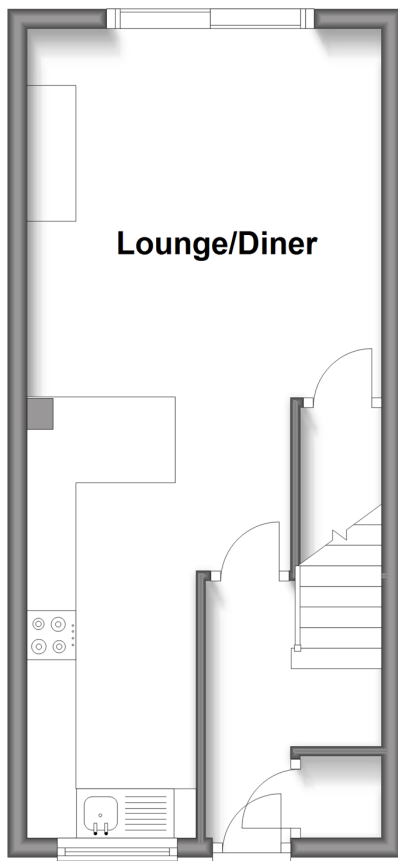
OVER 60?

Secure this property
for up to **59% less!**

Wards
Helping you move forwards

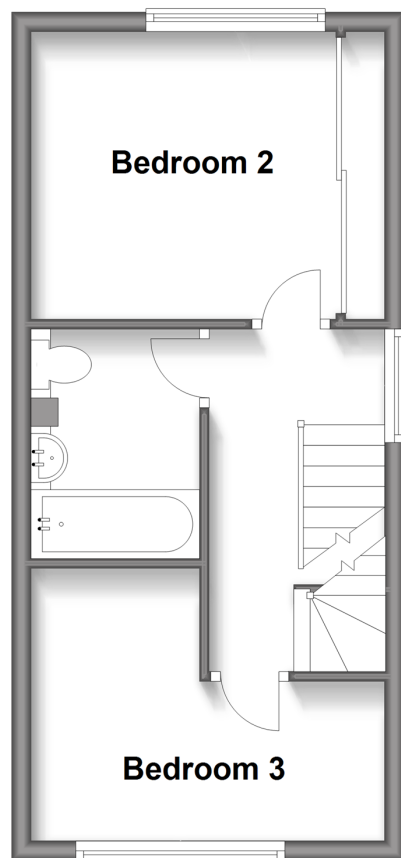
Ground Floor

Approx. 29.8 sq. metres (321.2 sq. feet)



First Floor

Approx. 29.6 sq. metres (318.9 sq. feet)



Second Floor

Approx. 19.6 sq. metres (211.1 sq. feet)



Accommodation

GROUND FLOOR

Entrance Hall

Kitchen: 10'6 x 5'7 (3.20m x 1.70m)

Lounge/Diner: 16'0 up to door well x 11'8 (4.88m x 3.56m)

FIRST FLOOR

Landing

Bedroom 2: 11'9 into fitted wardrobes x 9'7 (3.58m x 2.92m)

Bedroom 3: 11'9 (3.58m) x 9'1 (2.77m) narrowing to 5'1 (1.55m)

Bathroom

SECOND FLOOR

Landing

Bedroom 1: 12'9 into recess (3.89m) narrowing to 9'6 (2.90m) x 10'9 (3.28m)

En-Suite Bathroom

OUTSIDE

Front & Rear Gardens

Garage En-Bloc



Main features

- Immaculate throughout - simply move in & relax
- Stunning fitted kitchen - making cooking a pleasure
- Sociable lounge/diner - perfect for entertaining & for today's lifestyle
- All bedrooms are a great size - no box rooms here
- Soak up the sun in the private rear garden that's perfect for barbecues & ideal for children to play



Nearest Schools

Primary Schools: St James the Great Primary and Nursery School 1.1 miles, Snodland CofE Primary 1.3 miles, More Park Catholic Primary 1.3 miles. Secondary Schools: Holmesdale Technology College 1.7 miles, Grange Park School 2.0 miles, The Malling School 2.2 miles



Transport Information

Train Stations: New Hythe 1.5 miles, West Malling 1.6 miles, Snodland 2.4 miles



Address

Sassoon Close, Larkfield, Aylesford, Kent, ME20



Directions

For directions to this property please contact us.



Call Larkfield Branch 01732 847877 ■ wardsofkent.co.uk



- Legal advice should be taken to verify fixtures/fittings, planning, alterations and/or lease details
- Appliances & services are untested, dimensions are approximate and floor plans are not to scale
- Through a Homewise Home For Life Plan people aged 60+ can secure this property for up to 59% less, by purchasing a Lifetime Lease.



12921579/20240415/CK/RT