



OVER 60?

Secure this property
for up to **59% less!**

Price

£475,000

Freehold

4x  2x  2x 

**Scott Close, Ditton,
Aylesford, Kent, ME20**

Wards
Helping you move forwards



Main features

- You will be spoilt for space in this amazing extended home
- An en-suite bathroom & a bathroom adds luxury to the home
- Sunny & secluded garden to enjoy
- No traffic worries - set in a quiet cul-de-sac location
- Commuting is a breeze with good commuter links by road & rail

Accommodation

GROUND FLOOR

Entrance Hall

Cloakroom

Family Room: 12'2 x 10'1 (3.71m x 3.08m)

Lounge: 17'2 x 16'2 (5.24m x 4.93m)

Kitchen/Diner: 20'1 x 8'9 (6.13m x 2.67m)

FIRST FLOOR

Landing

Bedroom 1: 12'8 x 8'9 (3.86m x 2.67m)

En-Suite Bathroom

Bedroom 2: 12'8 x 8'11 (3.86m x 2.72m)

Bedroom 3: 12'0 x 9'4 (3.66m x 2.85m)

Bedroom 4: 9'8 x 6'10 (2.95m x 2.08m)

Bathroom

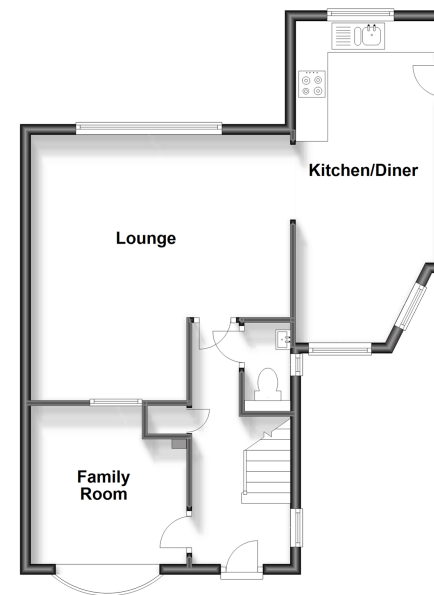
OUTSIDE

Driveway & Garage

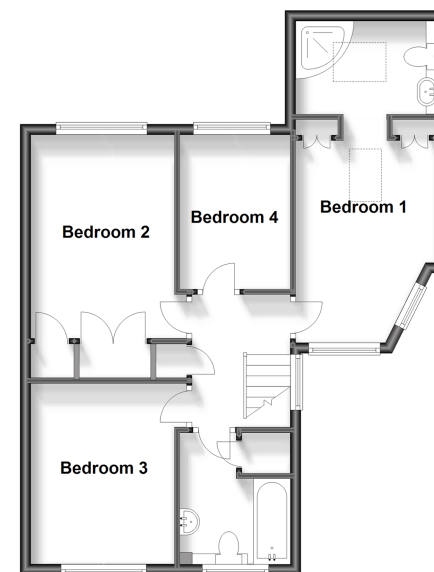
Rear Garden

Shed

Ground Floor
Approx. 56.3 sq. metres (606.0 sq. feet)



First Floor
Approx. 55.6 sq. metres (599.0 sq. feet)



Call Larkfield - 01732 847877 ■ wardsof Kent.co.uk

- Legal advice should be taken to verify fixtures/fittings, planning, alterations and/or lease details
- Appliances & services are untested, dimensions are approximate and floor plans are not to scale
- Through a Homewise Home For Life Plan people aged 60+ can secure this property for up to 59% less, by purchasing a Lifetime Lease.



12923727/20231020/JT/JT