



Guide Price
£400,000

Freehold

3x  1x  2x 

**Acorn Grove, Holtwood,
Aylesford, Kent, ME20**

OVER 60?

Secure this property
for up to **59% less!**

Wards
Helping you move forwards



Main features

- No forward chain to worry about
- Perfect for a growing family with an amazing amount of living space
- Relax & soak up the sun in the secluded garden
- Walk to good schools & amenities close by
- Commuting is a breeze with great transport links by road & rail

Accommodation

GROUND FLOOR

Entrance Porch

Entrance Hall

Lounge: 12'11 x 10'4 (3.94m x 3.15m)

Dining Area: 11'2 x 8'10 (3.41m x 2.69m)

Family Room: 13'7 x 11'10 (4.14m x 3.61m)

Kitchen: 9'11 x 7'5 (3.02m x 2.26m)

FIRST FLOOR

Landing

Bedroom 1: 13'2 x 9'10 (4.02m x 3.00m)

Bedroom 2: 10'8 x 9'10 (3.25m x 3.00m)

Bedroom 3: 10'0 x 6'4 (3.05m x 1.93m)

Bathroom

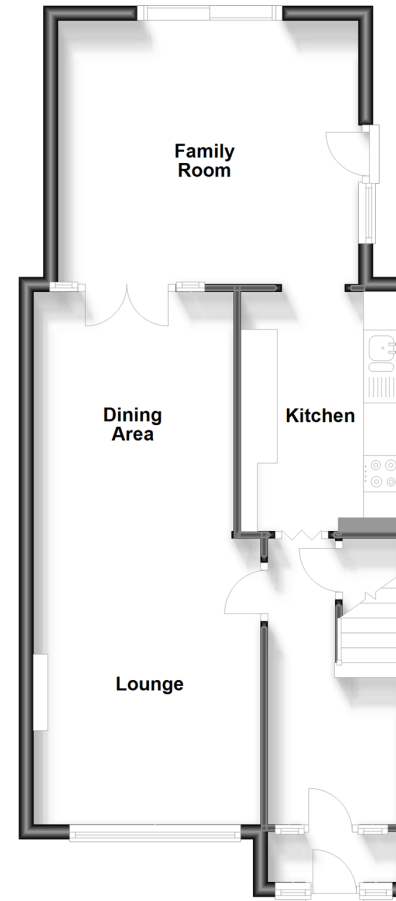
OUTSIDE

Front & Rear Gardens

Driveway

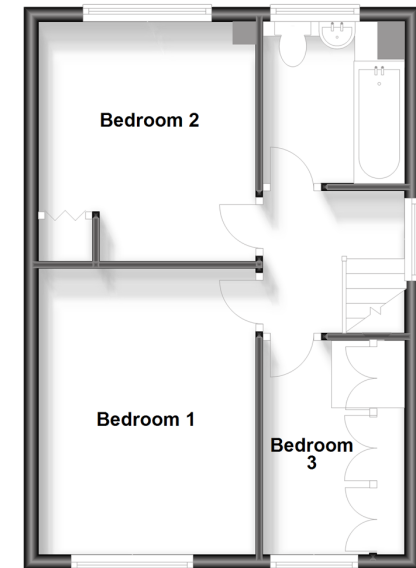
Ground Floor

Approx. 53.6 sq. metres (576.9 sq. feet)



First Floor

Approx. 37.0 sq. metres (397.9 sq. feet)



Call Larkfield - 01732 847877 ■ wardsofkent.co.uk

- Legal advice should be taken to verify fixtures/fittings, planning, alterations and/or lease details
- Appliances & services are untested, dimensions are approximate and floor plans are not to scale
- Through a Homewise Home For Life Plan people aged 60+ can secure this property for up to 59% less, by purchasing a Lifetime Lease.



12924187/20230802/CK/RT