



Price

£800,000

Freehold

5x  2x  2x 

**The Links, Addington,
West Malling, Kent,
ME19**

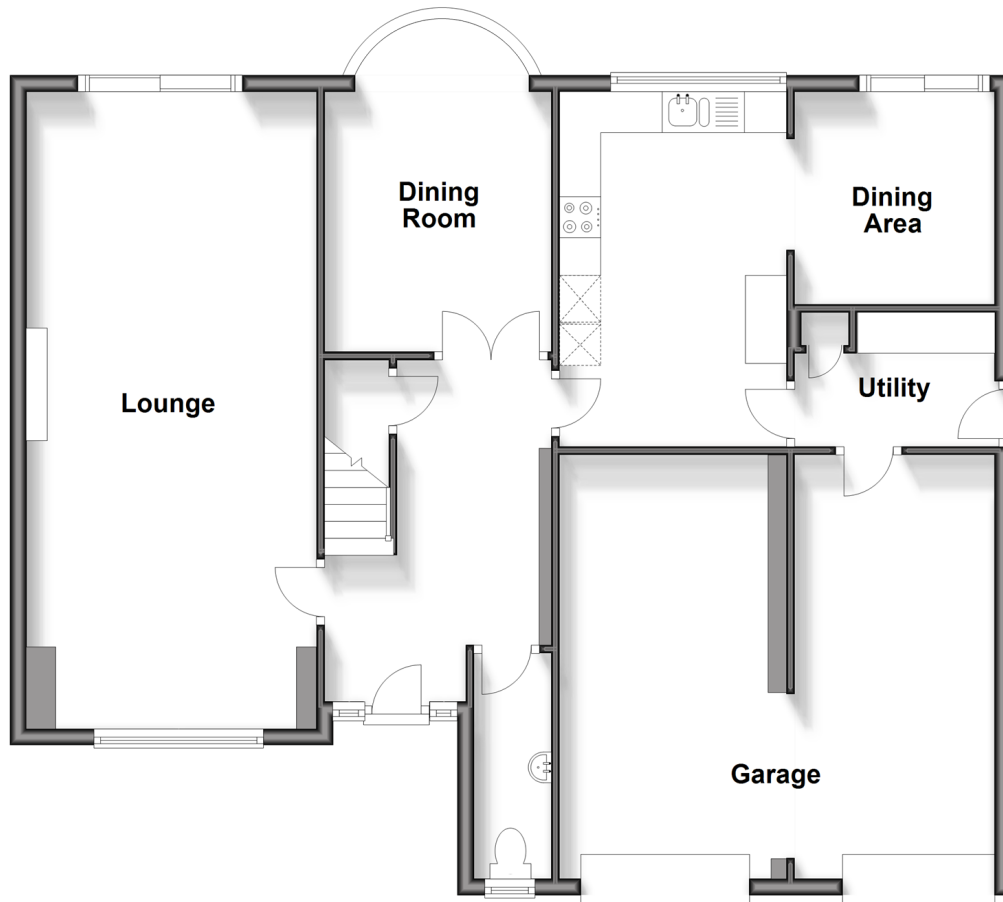
OVER 60?

Secure this property
for up to **59% less!**

Wards
Helping you move forwards

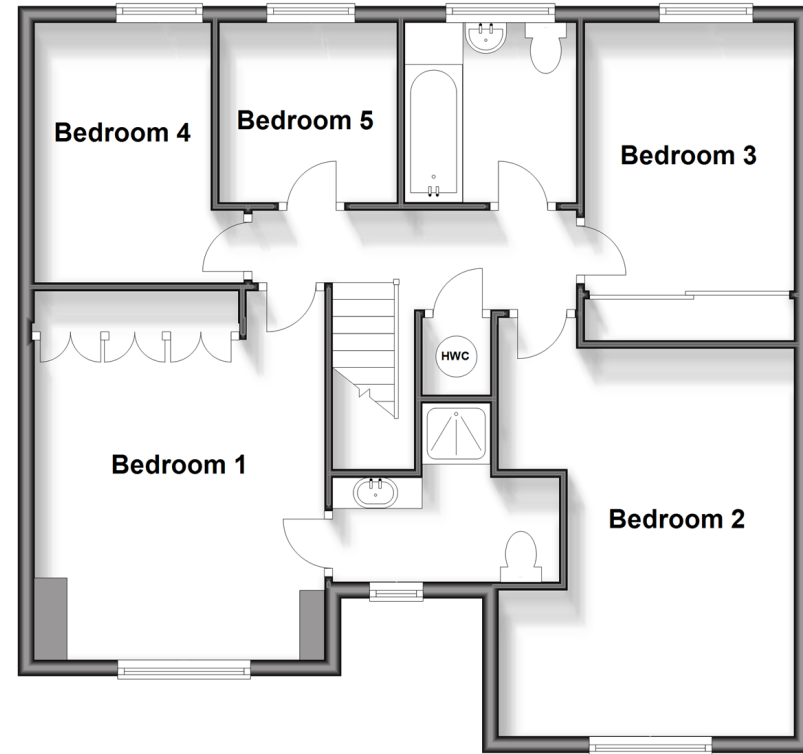
Ground Floor

Approx. 101.3 sq. metres (1090.8 sq. feet)



First Floor

Approx. 73.2 sq. metres (788.2 sq. feet)



Accommodation

GROUND FLOOR

Entrance Hall
Cloakroom
Kitchen: 14'0 x 8'0 (4.27m x 2.44m)
Dining Room: 9'2 x 8'1 (2.80m x 2.47m)
Utility: 7'5 x 5'2 (2.26m x 1.58m)
Lounge: 25'6 x 11'8 (7.78m x 3.56m)

FIRST FLOOR

Landing
Bedroom 1: 15'0 x 11'11 (4.58m x 3.63m)
En-Suite Shower Room
Bedroom 2: 15'6 x 11'10 (4.73m x 3.61m)
Bedroom 3: 10'8 x 8'3 (3.25m x 2.52m)
Bedroom 4: 10'4 x 8'4 (3.15m x 2.54m)
Bedroom 5: 7'3 x 7'1 (2.21m x 2.16m)
Bathroom

OUTSIDE

Front & Rear Gardens
Double Garage & Driveway



Main features

- Beautifully arranged modern detached family house
- Prestigious & highly sought after quiet cul-de-sac
- Excellent potential for further improvement/upgrades
- Generous secluded gardens offering excellent dimensions
- Easy access to M26, West Malling, shops & station



Nearest Schools

Primary Schools: Offham Primary 0.4 miles, Ryarsh Primary 0.9 miles, West Malling C of E Voluntary Controlled Primary and Language 1.1 miles
Secondary Schools: Grange Park School 1.2 miles, The Malling School 2.5 miles, Holmesdale Technology College



Transport Information

Train Stations: West Malling 1.6 miles, East Malling 2.7 miles, New Hythe 3.2 miles



Address

The Links, Addington, West Malling, Kent, ME19



Directions

For directions to this property please contact us.



Call Kings Hill Branch 01732 222211 ■ wardsofkent.co.uk



- Legal advice should be taken to verify fixtures/fittings, planning, alterations and/or lease details
- Appliances & services are untested, dimensions are approximate and floor plans are not to scale
- Through a Homewise Home For Life Plan people aged 60+ can secure this property for up to 59% less, by purchasing a Lifetime Lease.



12924350/20240325/SG/NR