



Price
£250,000

Freehold

2x  1x  2x 

**Church Street,
Rochester, Kent, ME1**

OVER 60?

Secure this property
for up to **59% less!**

Wards
Helping you move forwards



Main features

- Enjoy village life when you buy this cosy home
- Both bedrooms are doubles & you have a useful loft room too
- A separate dining room gives a perfect entertaining space
- Wonderful field & countryside views from the rear garden
- Lovely country walks from your door

Accommodation

GROUND FLOOR

Lounge: 11'6 x 10'11 (3.51m x 3.33m)
 Lobby
 Dining Room: 11'5 x 10'8 (3.48m x 3.25m)
 Kitchen: 8'0 x 6'10 (2.44m x 2.08m)
 Rear Lobby
 Bathroom

FIRST FLOOR

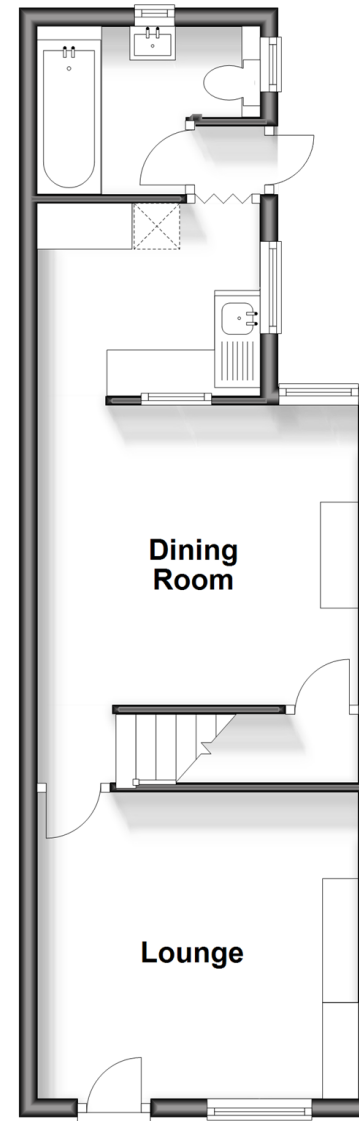
Landing
 Bedroom 1: 11'5 x 11'1 (3.48m x 3.38m)
 Bedroom 2: 11'5 x 11'0 (3.48m x 3.36m)

OUTSIDE

Front & Rear Gardens

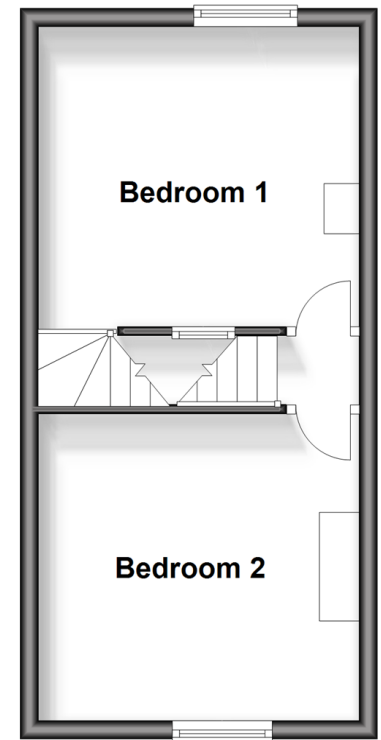
Ground Floor

Approx. 36.8 sq. metres (396.2 sq. feet)



First Floor

Approx. 14.5 sq. metres (156.5 sq. feet)



Call Larkfield - 01732 847877 ■ wardsof Kent.co.uk

- Legal advice should be taken to verify fixtures/fittings, planning, alterations and/or lease details
- Appliances & services are untested, dimensions are approximate and floor plans are not to scale
- Through a Homewise Home For Life Plan people aged 60+ can secure this property for up to 59% less, by purchasing a Lifetime Lease.

