



Guide Price
£540,000

Freehold

3x  2x  2x 

**Russett Way, Kings Hill,
West Malling, Kent,
ME19**

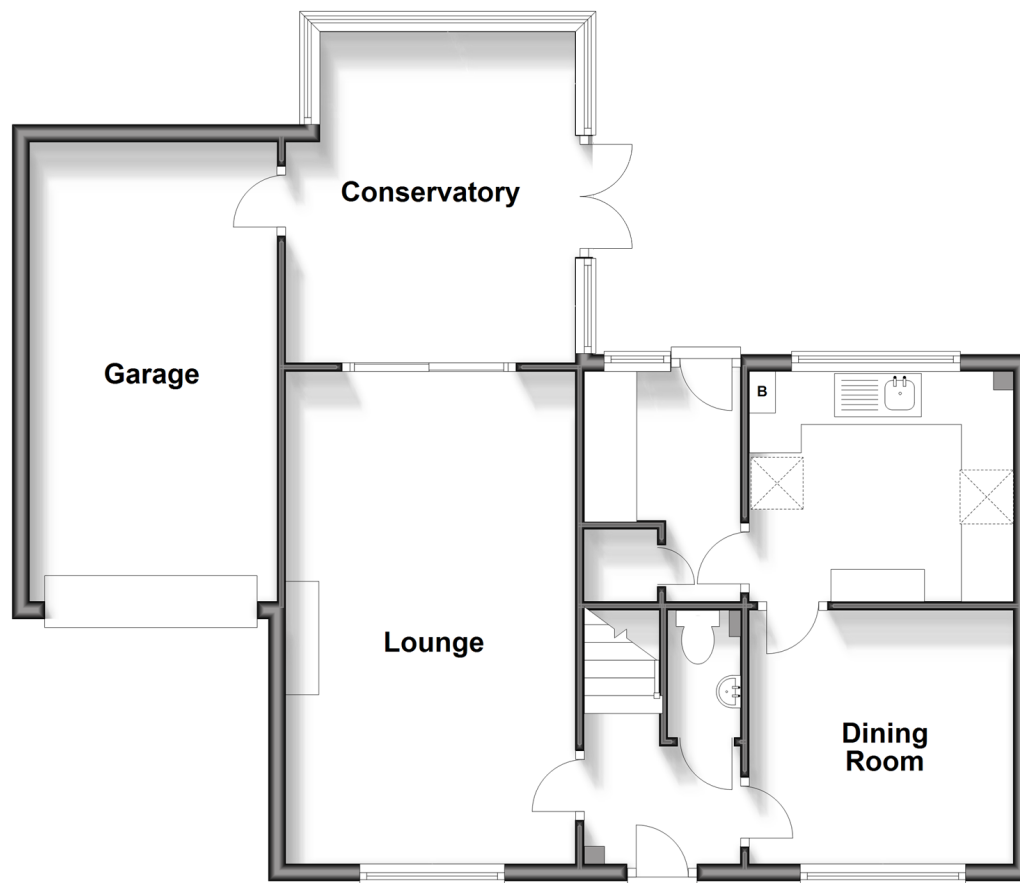
OVER 60?

Secure this property
for up to **59% less!**

Wards
Helping you move forwards

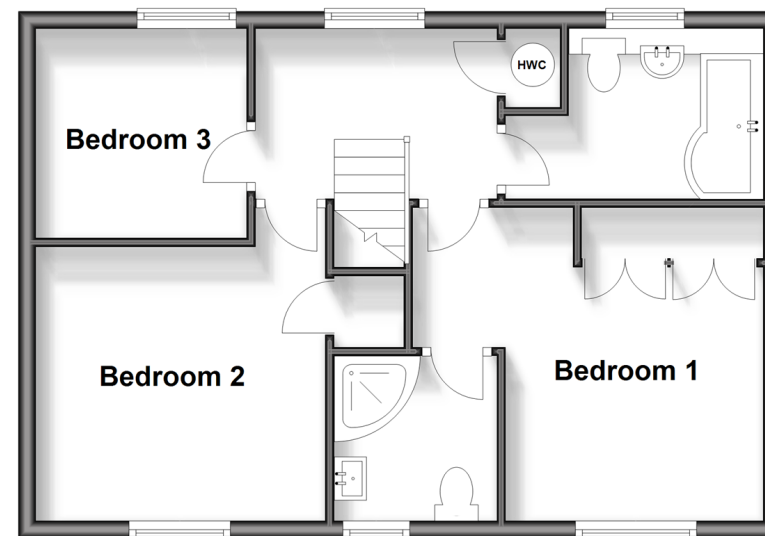
Ground Floor

Approx. 75.7 sq. metres (814.9 sq. feet)



First Floor

Approx. 47.6 sq. metres (512.3 sq. feet)



Accommodation

GROUND FLOOR

Entrance Hall
Cloakroom
Lounge: 18'8 x 10'11 (5.69m x 3.33m)
Dining Room: 9'11 x 9'9 (3.02m x 2.97m)
Kitchen: 10'1 x 8'4 (3.08m x 2.54m)
Utility : 8'5 x 8'4 (2.57m x 2.54m)
Conservatory: 12'9 x 11'6 (3.89m x 3.51m)

FIRST FLOOR

Landing
Bedroom 1: 11'11 x 9'11 (3.63m x 3.02m)
En-Suite Shower Room
Bedroom 2: 11'2 x 10'4 (3.41m x 3.15m)
Bedroom 3: 8'0 x 7'11 (2.44m x 2.41m)
Bathroom

OUTSIDE

Front & Rear Gardens
Garage & Driveway



Main features

- Beautifully presented detached house close to village green
- Enormous potential for development/extension
- No estate charges & close to village green
- Wonderfully secluded large garden
- Integral garage & private driveway



Nearest Schools

Primary Schools: Valley Invicta Primary 0.5 miles, Kings Hill School 0.7 miles, The Discovery School 1.6 miles

Secondary Schools: Grange Park School 4.3 miles, The Malling School 4.5 miles, Oakwood Park Grammar School



Transport Information

Train Stations: West Malling 2.8 miles, Aylesford 3.9 miles, East Farleigh 3.9 miles



Address

Russett Way, Kings Hill, West Malling, Kent, ME19



Directions

For directions to this property please contact us.



Wards
Helping you move forwards

Call Kings Hill Branch 01732 222211 ■ wardsofkent.co.uk



■ Legal advice should be taken to verify fixtures/fittings, planning, alterations and/or lease details ■ Appliances & services are untested, dimensions are approximate and floor plans are not to scale
■ Through a Homewise Home For Life Plan people aged 60+ can secure this property for up to 59% less, by purchasing a Lifetime Lease.



12926478/20240314/SG/NR