



OVER 60?

Secure this property
for up to **59% less!**

Price

£625,000

Freehold

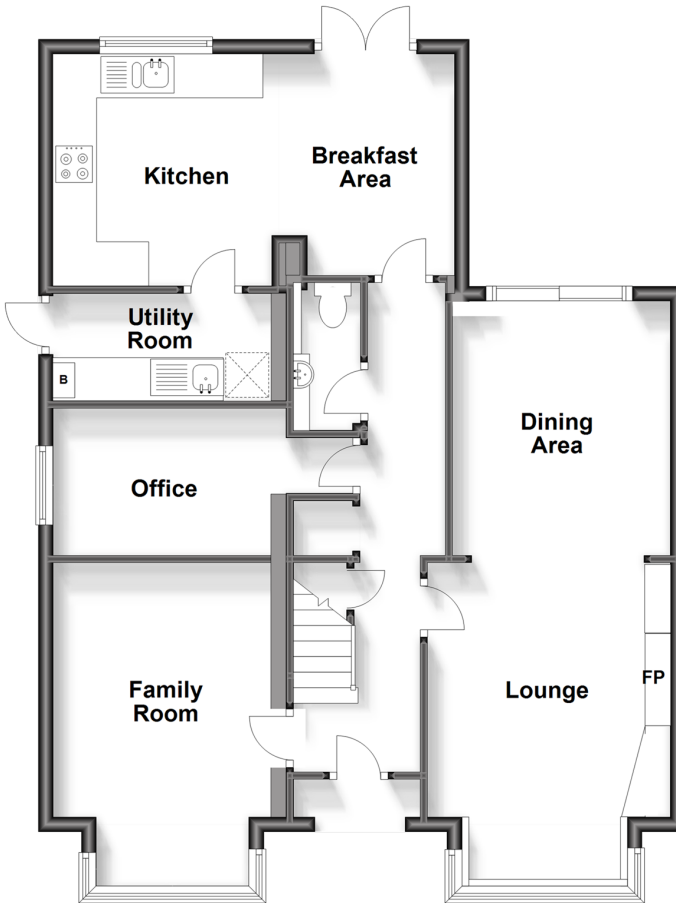
5x  2x  3x 

London Road, Ditton, Aylesford, Kent,
ME20

Wards
Helping you move forwards

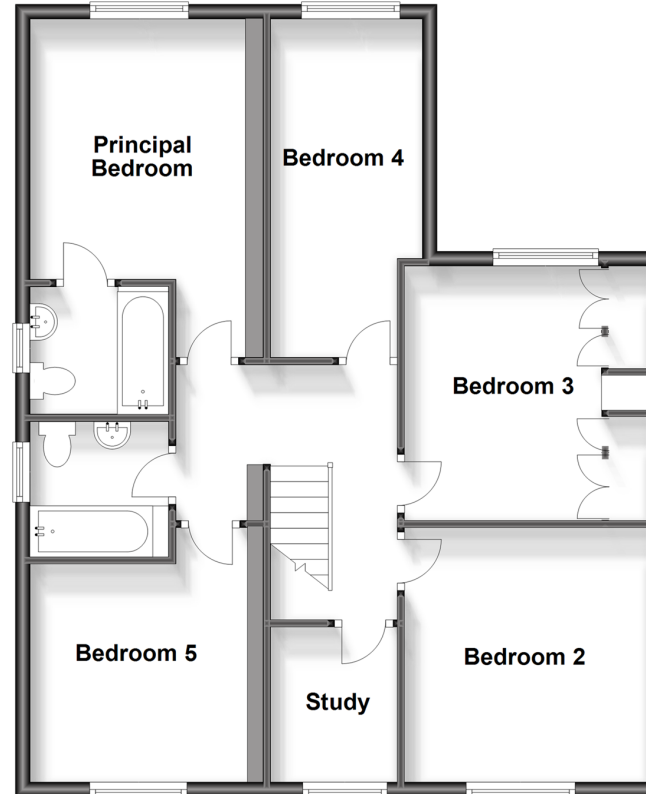
Ground Floor

Approx. 81.1 sq. metres (873.3 sq. feet)



First Floor

Approx. 77.8 sq. metres (837.3 sq. feet)



Accommodation

GROUND FLOOR

Entrance Hall

Family Room: 14'3 up to bay x 9'9 (4.35m x 2.97m)

Lounge: 11'3 up to bay x 10'10 (3.43m x 3.30m)

Dining Area: 11'0 x 9'1 (3.36m x 2.77m)

Office: 13'4 x 6'7 (4.07m x 2.01m)

Cloakroom

Breakfast Area: 9'10 x 6'7 (3.00m x 2.01m)

Kitchen: 10'1 x 9'9 (3.08m x 2.97m)

Utility Room: 9'9 x 4'10 (2.97m x 1.47m)

FIRST FLOOR

Landing

Principal Bedroom: 15'1 x 9'8 (4.60m x 2.95m)

En-Suite Bathroom

Bedroom 2: 11'6 x 10'10 (3.51m x 3.30m)

Bedroom 3: 11'3 x 10'10 (3.43m x 3.30m)

Bedroom 4: 15'0 x 7'0 (4.58m x 2.14m)

Bedroom 5: 9'9 x 9'3 (2.97m x 2.82m)

Study: 6'11 x 5'8 (2.11m x 1.73m)

Bathroom

OUTSIDE

Driveway

Rear Garden



Main features

- Spacious & well presented throughout
- A ground floor office & a upstairs study makes working from home a pleasure
- Enjoy the luxury of a ground floor cloakroom, an en-suite shower room & a bathroom
- Spacious lounge/dining area - perfect for entertaining & bringing the family together
- Relax in the lovely sized secluded & sunny garden



Nearest Schools

Primary Schools: Ditton C of E Junior School 0.3 miles, Aylesford Primary 0.7 miles, Brookfield Junior School 0.9 miles. Secondary Schools: Aylesford School 0.7 miles, The Malling School 1.3 miles, St Augustine Academy 2.7 miles



Transport Information

Train Stations: Aylesford 0.6 miles, East Malling 1.7 miles, West Malling 1.7 miles



Address

London Road, Ditton, Aylesford, Kent, ME20



Directions

For directions to this property please contact us.



Wards
Helping you move forwards

Call Larkfield Branch 01732 847877 ■ wardsofkent.co.uk



■ Legal advice should be taken to verify fixtures/fittings, planning, alterations and/or lease details ■ Appliances & services are untested, dimensions are approximate and floor plans are not to scale
■ Through a Homewise Home For Life Plan people aged 60+ can secure this property for up to 59% less, by purchasing a Lifetime Lease.



12927849/20231025/CK/JT