



Price
£190,000

Leasehold

2x  2x  1x 

**Abery Drive, Larkfield,
Kent, ME20**

OVER 60?

Secure this property
for up to **59% less!**

Wards
Helping you move forwards



Main features

- Well presented ground floor apartment
- No forward chain to worry about
- Enjoy the luxury of both an en-suite shower room and a bathroom
- Sociable & spacious kitchen/dining/living room - ideal for entertaining
- Only a short walk to a Tesco supermarket & lovely walks close by at Leybourne Lakes Country Park

Accommodation

GROUND FLOOR

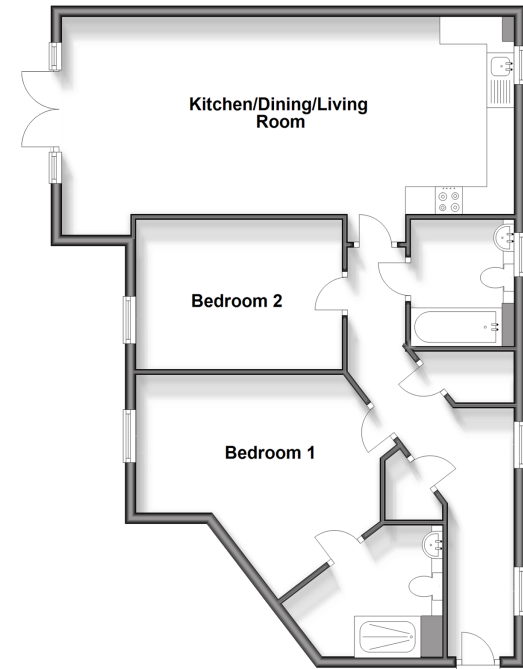
Entrance Hall
 Kitchen/Dining/Living Room: 27'1 x 13'5 (8.26m x 4.09m)
 Bedroom 1: 14'9 x 13'5 (4.50m x 4.09m)
 En-Suite Shower Room
 Bedroom 2: 12'5 x 8'10 (3.79m x 2.69m)
 Bathroom

OUTSIDE

Allocated Parking
 Communal Garden

Ground Floor

Approx. 80.8 sq. metres (869.5 sq. feet)



Call Larkfield - 01732 847877 ■ wardsofkent.co.uk

■ Legal advice should be taken to verify fixtures/fittings, planning, alterations and/or lease details
 ■ Through a Homewise Home For Life Plan people aged 60+ can secure this property for up to 59% less, by purchasing a Lifetime Lease.

■ Appliances & services are untested, dimensions are approximate and floor plans are not to scale



12931262/20231214/CK/JT