



OVER 60?

Secure this property
for up to **59% less!**

Price

£425,000

Freehold

3x  2x  2x 

**New Hythe Lane,
Larkfield, Aylesford,
Kent, ME20**

Wards
Helping you move forwards



Main features

- Work from home with ease in the study & save the cost of commuting
- Stunning kitchen/diner - great for entertaining
- Handy ground floor cloakroom
- Stunning views of Leybourne Lakes to enjoy
- Commuting is easy - short walk to a rail station & good access to the M20

Accommodation

GROUND FLOOR

Entrance Hall

Cloakroom

Study: 11'2 x 7'10 (3.41m x 2.39m)

Lounge: 17'7 x 15'5 (5.36m x 4.70m)

Kitchen/Diner: 20'1 x 12'1 (6.13m x 3.69m)

FIRST FLOOR

Landing

Bedroom 1: 11'6 x 9'7 up to fitted wardrobes (3.51m x 2.92m)

En-Suite Shower Room

Bedroom 2: 11'3 x 8'0 (3.43m x 2.44m)

Bedroom 3: 7'11 x 6'11 (2.41m x 2.11m)

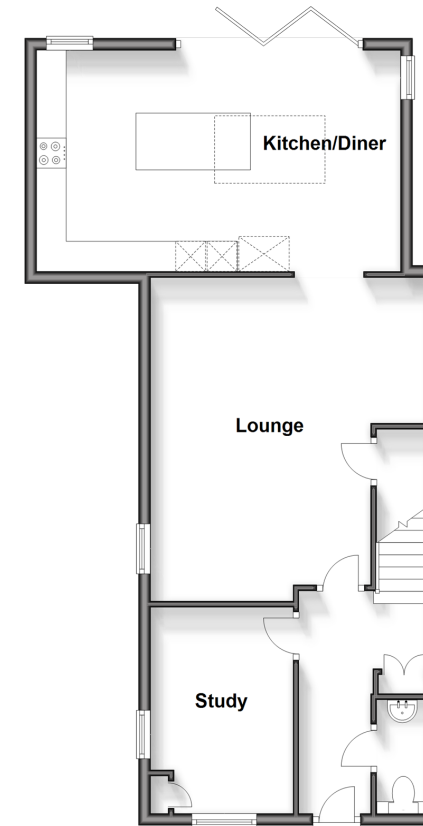
Bathroom

OUTSIDE

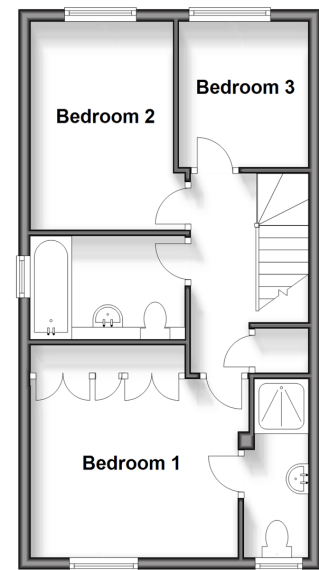
Front & Rear Gardens

2 Allocated Parking Spaces

Ground Floor
Approx. 695.9 sq. feet



First Floor
Approx. 444.9 sq. feet



Call Larkfield - 01732 847877 ■ wardsof Kent.co.uk

- Legal advice should be taken to verify fixtures/fittings, planning, alterations and/or lease details
- Appliances & services are untested, dimensions are approximate and floor plans are not to scale
- Through a Homewise Home For Life Plan people aged 60+ can secure this property for up to 59% less, by purchasing a Lifetime Lease.



12932296/20240131/CK/JT