



OVER 60?

Secure this property
for up to **59% less!**



Video Tour available

Price

£285,000

Freehold

2x 1x 1x

**Willowmead,
Leybourne, Kent, ME19**

Wards
Helping you move forwards



Main features

- Well presented home offered for sale chain free
- Allocated parking for your convenience
- Quiet Close with no through traffic
- The garden is private & landscaped for low maintenance making life easy
- Excellent amenities & commuter links by road & rail close by

Accommodation

GROUND FLOOR

Entrance Porch

Lounge: 14'5 x 11'1 (4.40m x 3.38m)

Kitchen/Diner: 11'2 x 7'7 (3.41m x 2.31m)

FIRST FLOOR

Landing

Bedroom 1: 11'3 (3.43m) x 8'10 (2.69m) narrowing to 7'9 (2.36m)

Bedroom 2: 7'10 x 6'0 (2.39m x 1.83m)

Bathroom

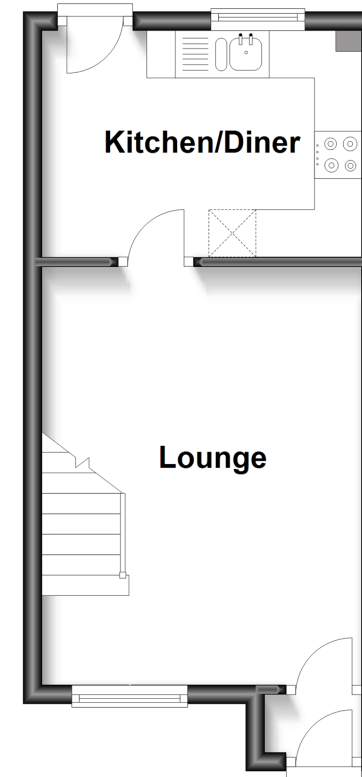
OUTSIDE

Front & Rear Gardens

Allocated Parking

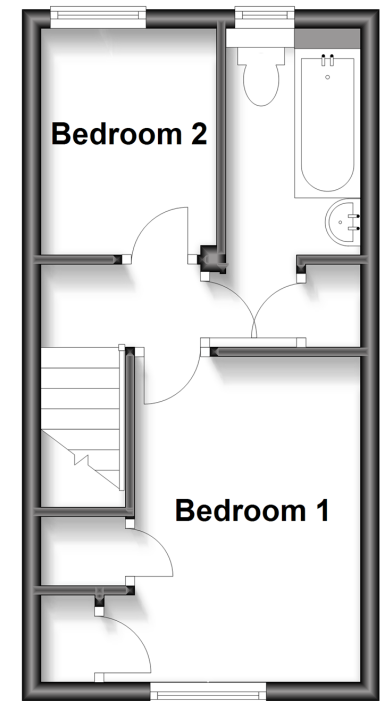
Ground Floor

Approx. 24.2 sq. metres (260.8 sq. feet)



First Floor

Approx. 23.4 sq. metres (252.1 sq. feet)



Call Larkfield - 01732 847877 ■ wardsof Kent.co.uk

- Legal advice should be taken to verify fixtures/fittings, planning, alterations and/or lease details
- Appliances & services are untested, dimensions are approximate and floor plans are not to scale
- Through a Homewise Home For Life Plan people aged 60+ can secure this property for up to 59% less, by purchasing a Lifetime Lease.



12932405/20230202/JT/RT