



OVER 60?

You could get up to
59% off the price!*



Video Tour available

Price

£290,000

Freehold

2x  1x  1x 

**London Road, Ditton,
Aylesford, Kent, ME20**

Wards
Helping you move forwards



Main features

- Buy into history with this attractive period home reputed to date back to around 1840
- Both bedrooms are doubles - no box room to worry about here
- A lovely kitchen/diner brings you together at meal times
- Relax in the lounge with a cosy log burner
- Private & landscaped garden with a pleasant tree view adds to the seclusion

Accommodation

GROUND FLOOR

Entrance Porch
Lounge: 11'8 x 11'4 (3.56m x 3.46m)
Kitchen/Diner: 11'5 x 10'2 (3.48m x 3.10m)
Lobby
Bathroom

FIRST FLOOR

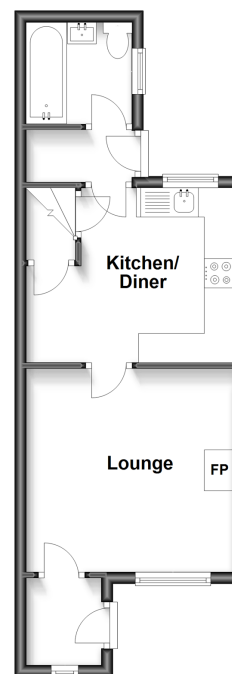
Landing
Bedroom 1: 11'5 x 10'3 up to fitted wardrobes (3.48m x 3.13m)
Bedroom 2: 10'3 x 8'10 (3.13m x 2.69m)

OUTSIDE

Driveway
Front & Rear Gardens

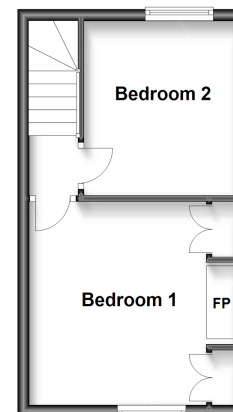
Ground Floor

Approx. 30.8 sq. metres (331.8 sq. feet)



First Floor

Approx. 23.6 sq. metres (253.7 sq. feet)



Call Larkfield - 01732 847877 ■ wardsofkent.co.uk

- Legal advice should be taken to verify fixtures/fittings, planning, alterations and/or lease details
- Our Homewise partnership offer a 'Home for Life' plan to buyers over 60, granting a lifetime lease for your protection and reducing the purchase price by up to 59%

- Appliances & services are untested, dimensions are approximate and floor plans are not to scale



12933284/20221107/AM/RT