



Video Tour available

Price

£250,000

2x  2x  1x 

Wateringbury Road, East Malling, Kent,
ME19

Wards
Helping you move forwards



Main features

- Escape to the country and enjoy life in a small friendly community
- Luxury home for the over 50's only
- Enjoy your own en-suite shower room & dressing area
- Bright & spacious kitchen/dining area & lounge
- Allocated parking & pets allowed

Accommodation

GROUND FLOOR

Entrance Hall

Kitchen/Dining/Lounge: 18'1 x 9'6
(5.52m x 2.90m)

Utility Room: 9'4 x 6'1 (2.85m x 1.86m)

Bedroom 1: 10'3 x 9'4 (3.13m x 2.85m)

Dressing Area

En-Suite Shower Room

Bedroom 2: 9'4 x 8'9 (2.85m x 2.67m)

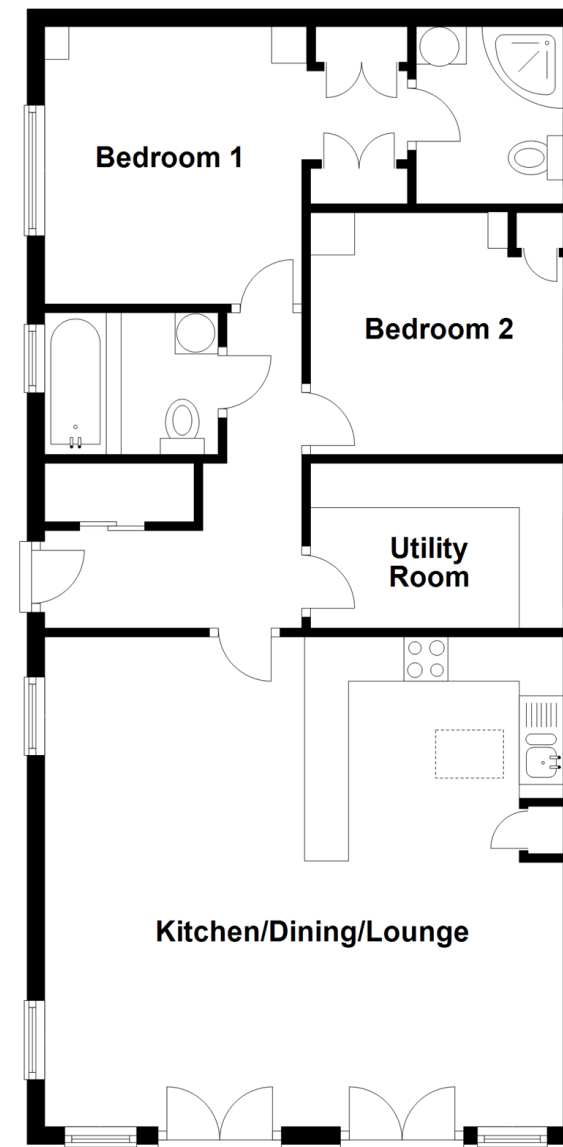
Bathroom

OUTSIDE

Allocated Parking

Ground Floor

Approx. 73.4 sq. metres (790.1 sq. feet)



Call Larkfield - 01732 847877 ■ wardsofkent.co.uk

- If buying to let, the energy rating will need to be improved to at least 'E' rating before you can let the property
- Legal advice should be taken to verify fixtures/fittings, planning, alterations and/or lease details
- Appliances & services are untested, dimensions are approximate and floor plans are not to scale



12933508/20231113/CK/RT