



Price
£435,000

Freehold

4x  1x  2x 

**Oak Drive, Larkfield,
Kent, ME20**

OVER 60?

Secure this property
for up to **59% less!**

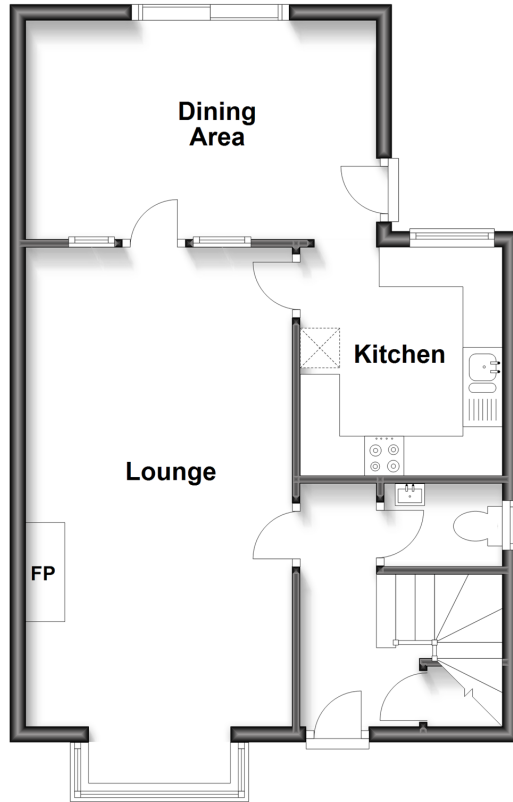


Video Tour available

Wards
Helping you move forwards

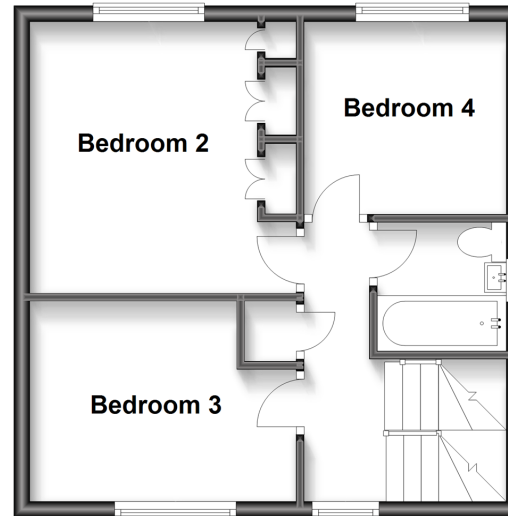
Ground Floor

Approx. 50.1 sq. metres (539.0 sq. feet)



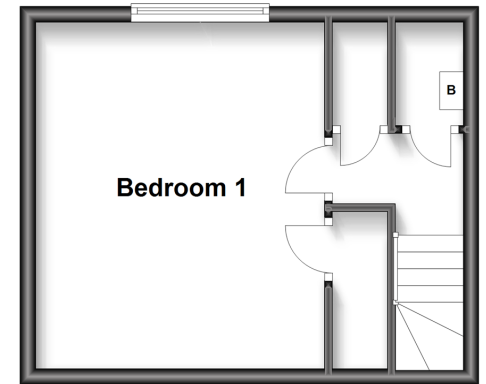
First Floor

Approx. 36.7 sq. metres (394.7 sq. feet)



Second Floor

Approx. 23.8 sq. metres (256.2 sq. feet)



Accommodation

GROUND FLOOR

Entrance Hall

Cloakroom

Lounge: 22'3 x 11'1 (6.79m x 3.38m)

Dining Area: 14'7 x 9'0 (4.45m x 2.75m)

Kitchen: 9'5 x 8'4 (2.87m x 2.54m)

FIRST FLOOR

Landing

Bedroom 2: 11'4 x 10'10 into fitted wardrobes (3.46m x 3.30m)

Bedroom 3: 8'9 (2.67m) x 7'11 (2.41m) narrowing to 6'10 (2.08m)

Bedroom 4: 10'10 x 8'2 (3.30m x 2.49m)

Bathroom

SECOND FLOOR

Landing

Bedroom 1: 13'11 x 12'4 (4.24m x 3.76m)

OUTSIDE

Front & Rear Gardens

Driveway & Garage



Main features

- Beautifully presented family home in a great location
- The dining area is perfect for entertaining & for working from home
- The loft has been converted creating a wonderful bright & spacious bedroom
- Relax in the lovely sunny garden - a gardeners paradise
- Easy walk to good schools, doctors & shops



Nearest Schools

Primary Schools: Brookfield Junior School 0.4 miles, Lunsford Primary 0.4 miles, Ditton C of E Junior School 0.9 miles. Secondary Schools: The Malling School 1.1 miles, Aylesford School 1.4 miles, Grange Park School 2.8 miles



Transport Information

Train Stations: Aylesford 1.2 miles, New Hythe 1.5 miles, Barming 1.9 miles



Address

Oak Drive, Larkfield, Kent, ME20



Directions

For directions to this property please contact us.



Wards
Helping you move forwards

Call Larkfield Branch 01732 847877 ■ wardsofkent.co.uk



■ Legal advice should be taken to verify fixtures/fittings, planning, alterations and/or lease details ■ Appliances & services are untested, dimensions are approximate and floor plans are not to scale
■ Through a Homewise Home For Life Plan people aged 60+ can secure this property for up to 59% less, by purchasing a Lifetime Lease.



12933637/20230206/AM/RT