



Price
£325,000

Freehold

3x  1x  1x 

**Scott Close, Ditton,
Aylesford, Kent, ME20**

Wards
Helping you move forwards



Main features

- Smart extended home with no forward chain to worry about
- Handy ground floor cloakroom
- Sociable lounge/dining area - ideal for bringing the family together
- Work from home with ease in the study area
- Great commuter links by road/rail close by

Accommodation

GROUND FLOOR

Entrance Porch
 Entrance Hall
 Cloakroom
 Lounge: 13'4 x 11'1 (4.07m x 3.38m)
 Dining Area: 12'0 x 7'3 (3.66m x 2.21m)
 Kitchen/Breakfast Area: 16'9 x 9'7 (5.11m x 2.92m)
 Study Area: 9'0 x 7'8 (2.75m x 2.34m)

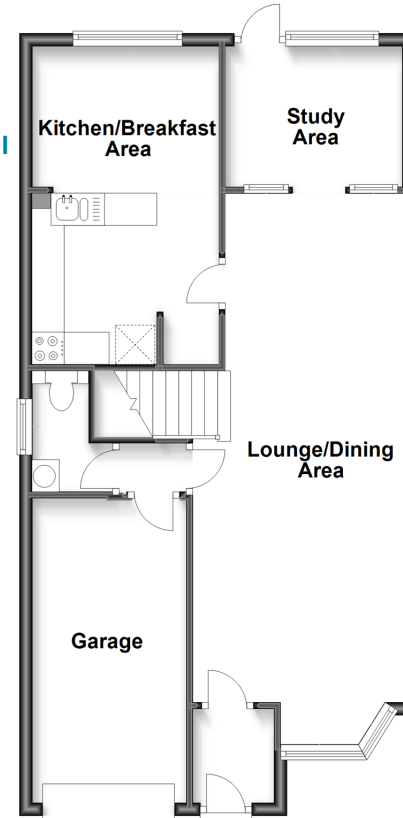
FIRST FLOOR

Landing
 Bedroom 1: 15'8 x 8'10 (4.78m x 2.69m)
 Bedroom 2: 11'8 x 11'6 (3.56m x 3.51m)
 Bedroom 3: 10'9 x 7'8 (3.28m x 2.34m)
 Bathroom

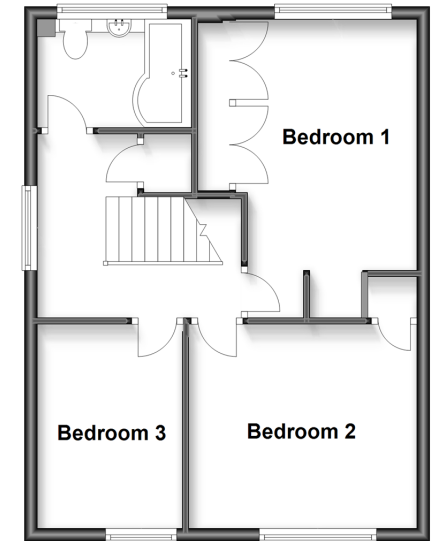
OUTSIDE

Front & Rear Gardens
 Driveway & Garage

Ground Floor
 Approx. 66.7 sq. metres (717.5 sq. feet)



First Floor
 Approx. 46.7 sq. metres (503.0 sq. feet)



Call Larkfield - 01732 847877 ■ wardsof Kent.co.uk

- Legal advice should be taken to verify fixtures/fittings, planning, alterations and/or lease details
- Appliances & services are untested, dimensions are approximate and floor plans are not to scale



12933678/20231031/CK/JT