



OVER 60?

Secure this property
for up to **59% less!**

Price

£265,000

Leasehold

2x  2x  1x 

**The Lakes, Larkfield,
Kent, ME20**

Wards
Helping you move forwards



Main features

- **Well presented ground floor apartment**
- **No parking worries with your own allocated space**
- **Enjoy the luxury of an en-suite bathroom & a shower room**
- **Relax with a drink on the communal decking area after a busy day**
- **A wonderful location to live with good amenities & leisure facilities close by**

Accommodation

GROUND FLOOR

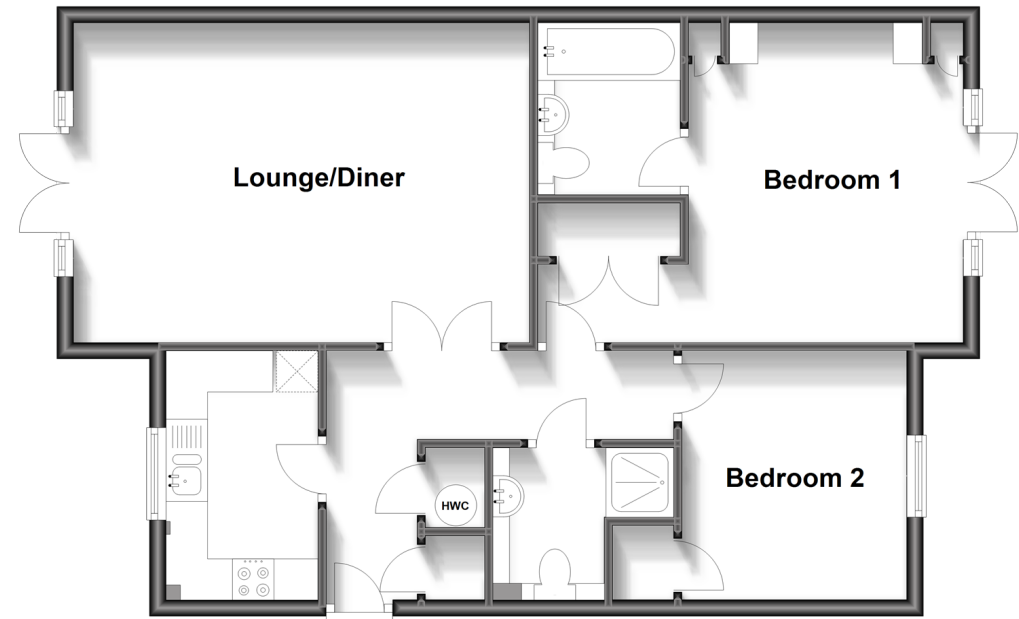
Entrance Hall
 Kitchen: 9'9 x 5'11 (2.97m x 1.80m)
 Lounge/Diner: 18'0 x 12'0 (5.49m x 3.66m)
 Bedroom 1: 12'7 x 10'8 (3.84m x 3.25m)
 En-Suite Bathroom
 Bedroom 2: 9'8 x 8'8 (2.95m x 2.64m)
 Shower Room

OUTSIDE

Allocated Parking Space
 Communal Decking Area
 Communal Gardens

Ground Floor

Approx. 69.6 sq. metres (749.5 sq. feet)



Call Larkfield - 01732 847877 ■ wardsofkent.co.uk

■ Legal advice should be taken to verify fixtures/fittings, planning, alterations and/or lease details
 ■ Through a Homewise Home For Life Plan people aged 60+ can secure this property for up to 59% less, by purchasing a Lifetime Lease.

■ Appliances & services are untested, dimensions are approximate and floor plans are not to scale



12934158/20230928/AM/JT