



OVER 60?

Secure this property
for up to **59% less!**

Price

£445,000

Freehold

3x  2x  2x 

**St. Peter's Road, Ditton,
Aylesford, Kent, ME20**

Wards
Helping you move forwards



Main features

- Cooking will be a pleasure in the super-sized kitchen
- Entertain in style in the spacious lounge & dining area
- Former garage currently being used as bedroom with an en-suite shower room
- Beautiful & private sunny garden
- Summer house - ideal for storage

Accommodation

GROUND FLOOR

Entrance Porch
 Entrance Hall
 Former Garage - Guest Bedroom: 12'9 x 7'8 (3.89m x 2.34m)
 En-Suite Shower Room
 Kitchen: 16'7 x 9'7 (5.06m x 2.92m)
 Lounge: 24'0 x 11'2 at widest point (7.32m x 3.41m)
 Dining Area: 10'2 x 9'1 (3.10m x 2.77m)

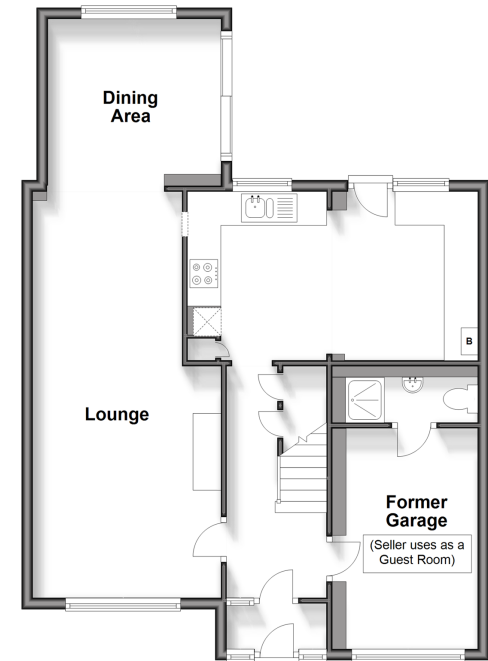
FIRST FLOOR

Landing
 Bedroom 1: 14'0 into fitted wardrobes x 10'3 (4.27m x 3.13m)
 Bedroom 2: 10'10 x 9'7 (3.30m x 2.92m)
 Bedroom 3: 7'4 x 7'0 (2.24m x 2.14m)
 Bathroom

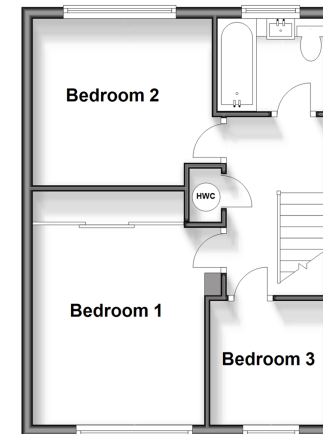
OUTSIDE

Driveway
 Rear Garden
 Summer House: 15'6 x 12'4 (4.73m x 3.76m)

Ground Floor
 Approx. 71.3 sq. metres (767.2 sq. feet)



First Floor
 Approx. 38.0 sq. metres (408.7 sq. feet)



Call Larkfield - 01732 847877 ■ wardsofkent.co.uk

- Legal advice should be taken to verify fixtures/fittings, planning, alterations and/or lease details
- Appliances & services are untested, dimensions are approximate and floor plans are not to scale
- Through a Homewise Home For Life Plan people aged 60+ can secure this property for up to 59% less, by purchasing a Lifetime Lease.



12934172/20240404/CK/RT