



Price
£300,000

Freehold

2x  1x  2x 

**Rochester Road,
Burham, Rochester,
Kent, ME1**

OVER 60?

Secure this property
for up to **59% less!**

Wards
Helping you move forwards



Main features

- Beautifully presented & extended Victorian home
- Handy ground floor cloakroom
- The bathroom is accessed via bedroom 1
- Lovely feature fireplaces & wonderful sunny garden to enjoy
- Planning permission for further extension - see agent for details

Accommodation

GROUND FLOOR

Entrance Hall

Dining Room: 13'1 into bay x 8'3 (3.99m x 2.52m)

Lounge: 14'3 x 11'2 (4.35m x 3.41m)

Kitchen: 11'1 x 9'9 (3.38m x 2.97m)

Lobby: 7'3 x 5'9 (2.21m x 1.75m)

Cloakroom

FIRST FLOOR

Landing

Bedroom 2: 11'5 x 11'2 (3.48m x 3.41m)

Bedroom 1: 12'0 x 11'2 (3.66m x 3.41m)

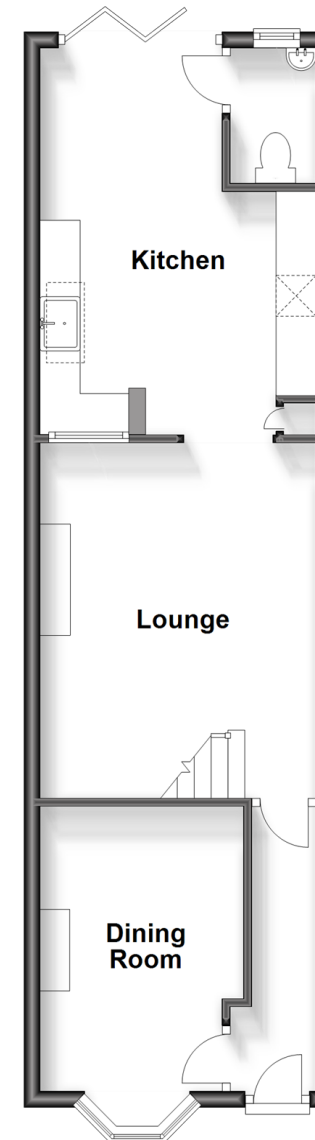
Bathroom: 9'11 x 7'0 (3.02m x 2.14m)

OUTSIDE

Front & Rear Gardens

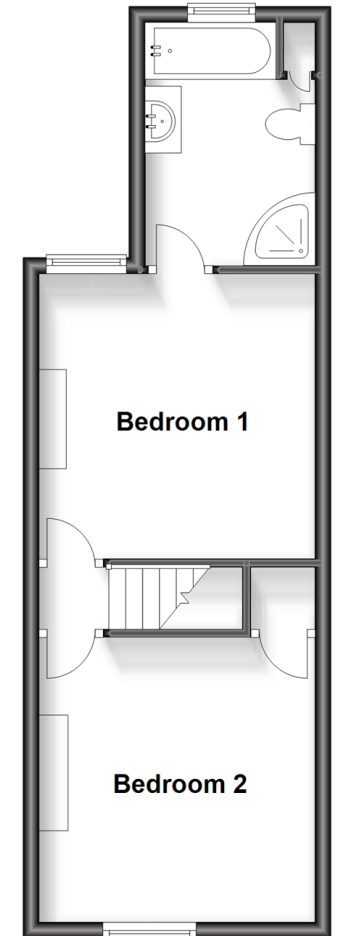
Ground Floor

Approx. 44.0 sq. metres (473.2 sq. feet)



First Floor

Approx. 33.9 sq. metres (365.2 sq. feet)



Call Larkfield - 01732 847877 ■ wardsof Kent.co.uk

- Legal advice should be taken to verify fixtures/fittings, planning, alterations and/or lease details
- Appliances & services are untested, dimensions are approximate and floor plans are not to scale
- Through a Homewise Home For Life Plan people aged 60+ can secure this property for up to 59% less, by purchasing a Lifetime Lease.



12934197/20231123/RT/RT