



OVER 60?

Secure this property
for up to **59% less!**

Price
£365,000

Freehold

3x  1x  1x 

**Harvest Ridge,
Leybourne, West
Malling, Kent, ME19**

Wards
Helping you move forwards



Main features

- Beautifully presented throughout
- Desirable kitchen/dining area - perfect for today's lifestyle
- Stylish & modern bathroom
- Pretty secluded garden - enjoy the outdoors without leaving home
- Handy garage en-bloc close by - great for storage

Accommodation

GROUND FLOOR

Entrance Porch

Lounge: 14'2 x 13'9 (4.32m x 4.19m)

Kitchen/Dining Area: 13'4 (4.07m) x 11'0 (3.36m) narrowing to 9'0 (2.75m)

FIRST FLOOR

Landing

Bedroom 1: 13'9 into fitted wardrobes x 8'6 (4.19m x 2.59m)

Bedroom 2: 9'3 x 7'9 (2.82m x 2.36m)

Bedroom 3: 9'2 x 5'8 (2.80m x 1.73m)

Bathroom

OUTSIDE

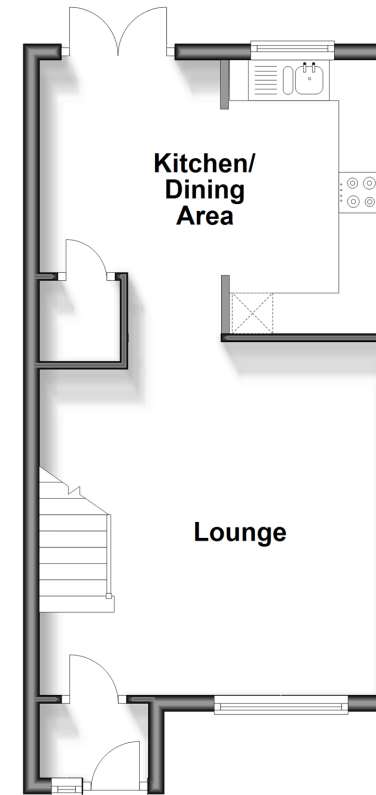
Front & Rear Gardens

Garage En-Bloc

Shed

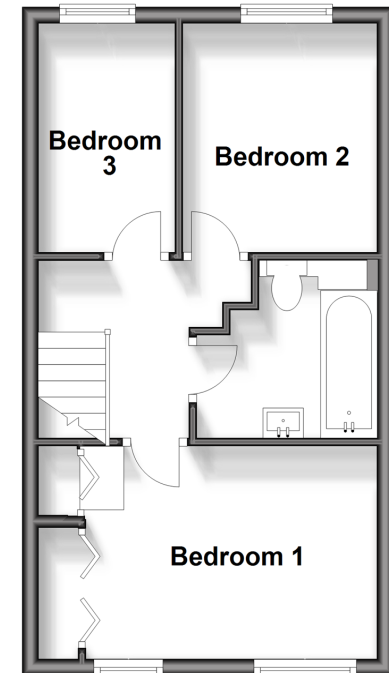
Ground Floor

Approx. 34.2 sq. metres (368.3 sq. feet)



First Floor

Approx. 32.8 sq. metres (353.6 sq. feet)



Call Larkfield - 01732 847877 ■ wardsofkent.co.uk

- Legal advice should be taken to verify fixtures/fittings, planning, alterations and/or lease details
- Appliances & services are untested, dimensions are approximate and floor plans are not to scale
- Through a Homewise Home For Life Plan people aged 60+ can secure this property for up to 59% less, by purchasing a Lifetime Lease.



12934534/20240516/CK/RT