



**OVER 60?**

Secure this property  
for up to **59% less!**

**Price**

**£280,000**

**Freehold**

2x  1x  1x 

**Willowmead,  
Leybourne, Kent, ME19**

**Wards**  
Helping you move forwards





## Main features

- Lovely fitted kitchen - makes cooking a pleasure
- Allocated parking for your convenience
- Sunny & secluded garden to enjoy
- Set in a quiet Close with no through traffic
- Good schools, amenities & commuter links by road & rail close by

## Accommodation

### GROUND FLOOR

Entrance Porch

Kitchen: 11'0 x 7'10 (3.36m x 2.39m)

Lounge/Diner: 15'1 x 11'0 (4.60m x 3.36m)

### FIRST FLOOR

Landing

Bedroom 1: 10'11 x 8'0 (3.33m x 2.44m)

Bedroom 2: 12'0 x 6'0 (3.66m x 1.83m)

Bathroom

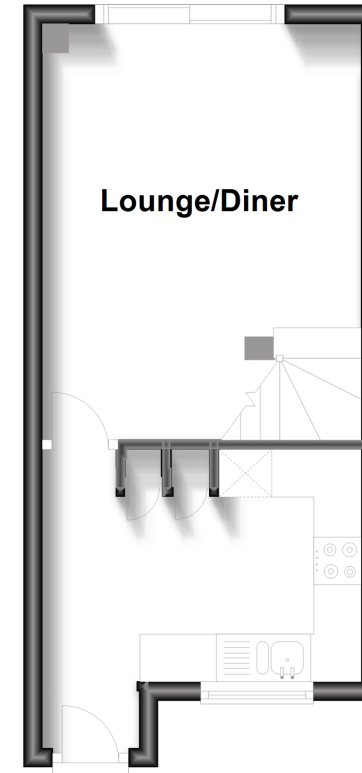
### OUTSIDE

Front & Rear Gardens

2 Allocated Parking Spaces

## Ground Floor

Approx. 24.0 sq. metres (258.3 sq. feet)



## First Floor

Approx. 23.3 sq. metres (250.7 sq. feet)



**Call Larkfield - 01732 847877 ■ [wardsof Kent.co.uk](http://wardsof Kent.co.uk)**

- Legal advice should be taken to verify fixtures/fittings, planning, alterations and/or lease details
- Appliances & services are untested, dimensions are approximate and floor plans are not to scale
- Through a Homewise Home For Life Plan people aged 60+ can secure this property for up to 59% less, by purchasing a Lifetime Lease.



12934586/20231102/TT/JT