



OVER 60?

Secure this property
for up to **59% less!**



Video Tour available

Price

£425,000

Freehold

3x  1x  2x 

**High Street, East
Malling, Kent, ME19**

Wards
Helping you move forwards



Main features

- Period home bursting with character
- Sociable kitchen/dining area - ideal for todays lifestyle & entertaining
- Bedroom 3 with toilet can only be accessed via bedroom 2
- Amazing garden - enjoy a lovely natural stream & a summer house
- Excellent commuter links by road & easy walk to the rail station

Accommodation

GROUND FLOOR

Lounge: 14'0 at widest point x 13'3 into bay (4.27m x 4.04m)

Dining Area: 14'0 x 11'3 (4.27m x 3.43m)

Kitchen: 13'9 x 7'7 (4.19m x 2.31m)

Lobby

Bathroom

FIRST FLOOR

Landing

Bedroom 1: 14'0 x 10'11 (4.27m x 3.33m)

Bedroom 2: 14'0 x 11'3 (4.27m x 3.43m)

Bedroom 3 With Toilet: 13'11 x 7'9 (4.24m x 2.36m)

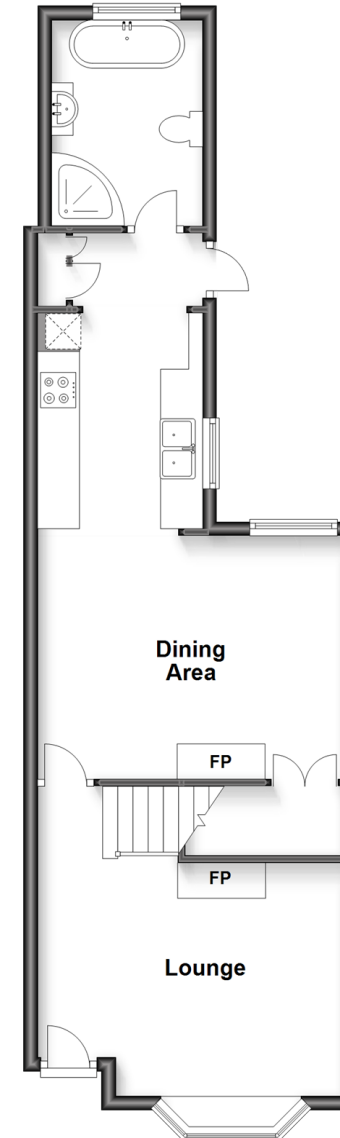
OUTSIDE

Front & Rear Gardens

Summer House

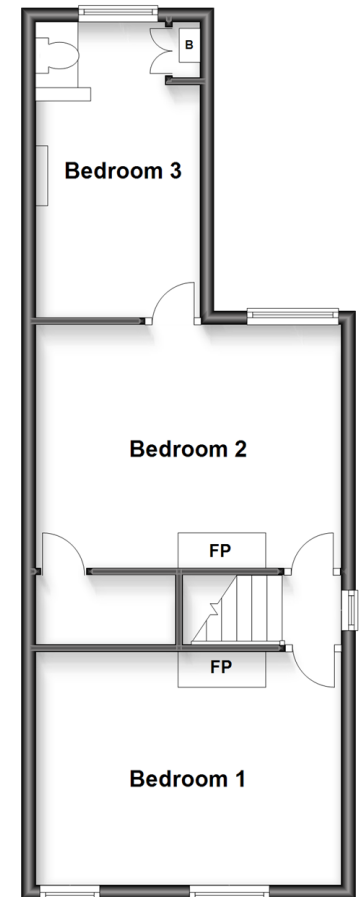
Ground Floor

Approx. 49.9 sq. metres (537.3 sq. feet)



First Floor

Approx. 44.8 sq. metres (482.6 sq. feet)



Call Larkfield - 01732 847877 ■ wardsof Kent.co.uk

- Legal advice should be taken to verify fixtures/fittings, planning, alterations and/or lease details
- Appliances & services are untested, dimensions are approximate and floor plans are not to scale
- Through a Homewise Home For Life Plan people aged 60+ can secure this property for up to 59% less, by purchasing a Lifetime Lease.



12934618/20230731/CK/RT