



Price
£335,000

Freehold

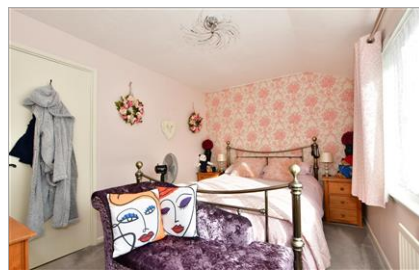
3x  1x  1x 

**Rochester Road,
Aylesford, Kent, ME20**

OVER 60?

Secure this property
for up to **59% less!**

Wards
Helping you move forwards



Main features

- Set in the heart of the quaint village of Aylesford
- Enjoy the comfortable garden cabin as a retreat or as an office
- Lovely setting with picturesque riverside walks close by
- Friendly village pubs & restaurants on your doorstep
- Charming location with a small stream to the front & wonderful local historical buildings

Accommodation

GROUND FLOOR

Kitchen: 11'10 x 7'0 (3.61m x 2.14m)
Dining Area: 11'6 x 7'9 (3.51m x 2.36m)
Lounge: 15'3 x 11'4 (4.65m x 3.46m)

FIRST FLOOR

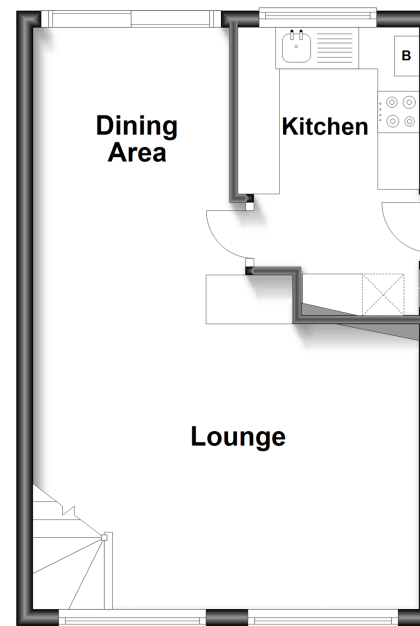
Landing
Bedroom 1: 12'2 x 8'10 (3.71m x 2.69m)
Bedroom 2: 9'8 x 7'1 (2.95m x 2.16m)
Bedroom 3: 10'2 x 5'6 (3.10m x 1.68m)
Bathroom

OUTSIDE

Front & Rear Gardens
Driveway
Garden Cabin: 12'11 x 9'9 (3.94m x 2.97m)
2 Sheds

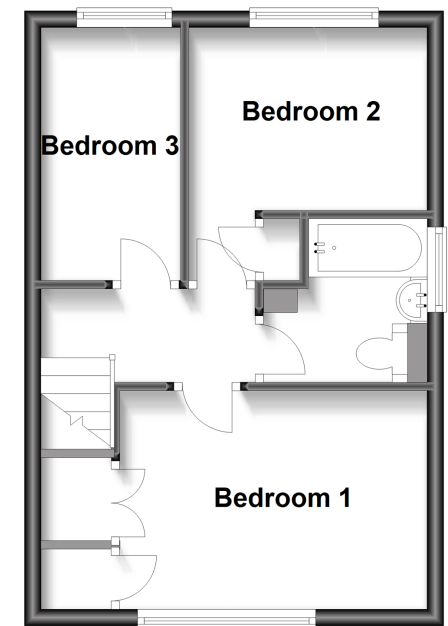
Ground Floor

Approx. 32.5 sq. metres (350.0 sq. feet)



First Floor

Approx. 32.5 sq. metres (350.0 sq. feet)



Call Larkfield - 01732 847877 ■ wardsofkent.co.uk

- The seller is a person connected with Wards as defined in the Estate Agents Act 1979
- Appliances & services are untested, dimensions are approximate and floor plans are not to scale

- Legal advice should be taken to verify fixtures/fittings, planning, alterations and/or lease details
- Through a Homewise Home For Life Plan people aged 60+ can secure this property for up to 59% less, by purchasing a Lifetime Lease.