



Video Tour available

Price

£220,000

2x  2x  1x 

Hillberry Park, Wateringbury Road, East
Malling, Kent, ME19

Wards
Helping you move forwards



Main features

- Immaculate throughout with no forward chain to worry about
- Exclusive park home community for the over 50's & pets are allowed
- Stunning kitchen/living area
- Luxury en-suite shower room & a bathroom to enjoy
- Private garden & a wrap around decked area to soak up the sun

Accommodation

GROUND FLOOR

Entrance Hall

Kitchen/Living Area: 19'4 x 18'2 (5.90m x 5.54m)

Utility Room

Bedroom 1: 11'3 x 9'5 (3.43m x 2.87m)

Dressing Area

En-Suite Shower Room

Bedroom 2: 9'5 x 9'4 (2.87m x 2.85m)

Bathroom

OUTSIDE

Front & Side Decking Area

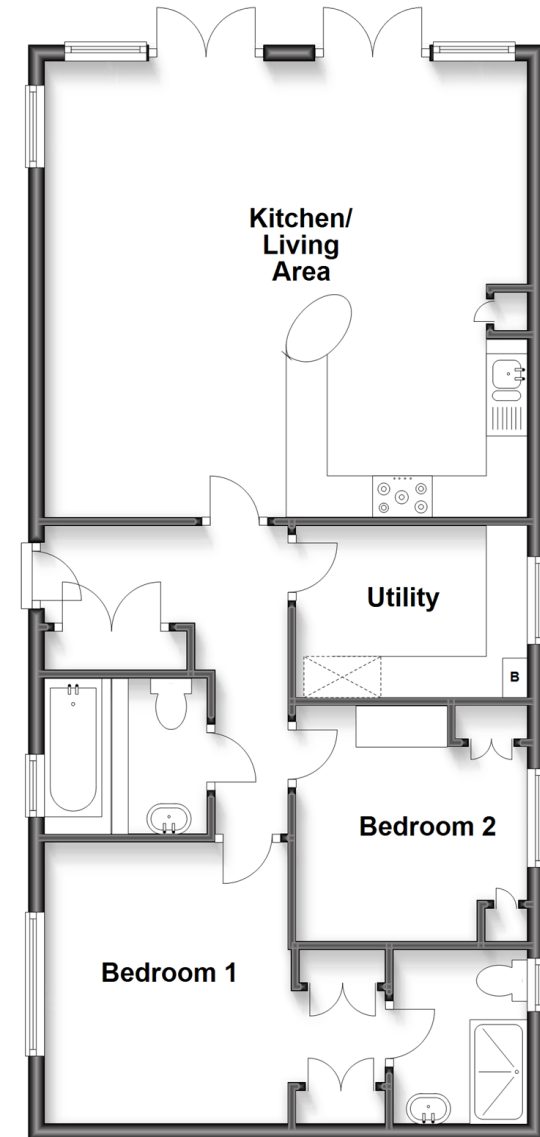
Side & Rear Gardens

Shed: 11'10 x 5'6 (3.61m x 1.68m)

Communal Parking

Ground Floor

Approx. 76.1 sq. metres (818.8 sq. feet)



Call Larkfield - 01732 847877 ■ wardsofkent.co.uk

- If buying to let, the energy rating will need to be improved to at least 'E' rating before you can let the property
- Legal advice should be taken to verify fixtures/fittings, planning, alterations and/or lease details
- Appliances & services are untested, dimensions are approximate and floor plans are not to scale



12934699/20230829/CK/RT