



**Price**

**£285,000**

**Leasehold**

2x  1x  1x 

**The Lakes, Larkfield,  
Aylesford, Kent, ME20**

**OVER 60?**

Secure this property  
for up to **59% less!**



**Video Tour available**

**Wards**  
Helping you move forwards





## Main features

- Ground floor apartment with beautiful lake views
- Stunning kitchen with integrated appliances making cooking a joy
- Relax in the bright & spacious lounge/diner
- Handy allocated parking space
- A wonderful location to live with excellent amenities & commuter links

## Accommodation

### GROUND FLOOR

Entrance Hall

Lounge/Diner: 19'2 x 10'9 (5.85m x 3.28m)

Kitchen: 9'7 x 6'4 (2.92m x 1.93m)

Bedroom 1: 14'8 x 8'10 (4.47m x 2.69m)

Bedroom 2: 9'9 x 8'10 (2.97m x 2.69m)

Bathroom

### OUTSIDE

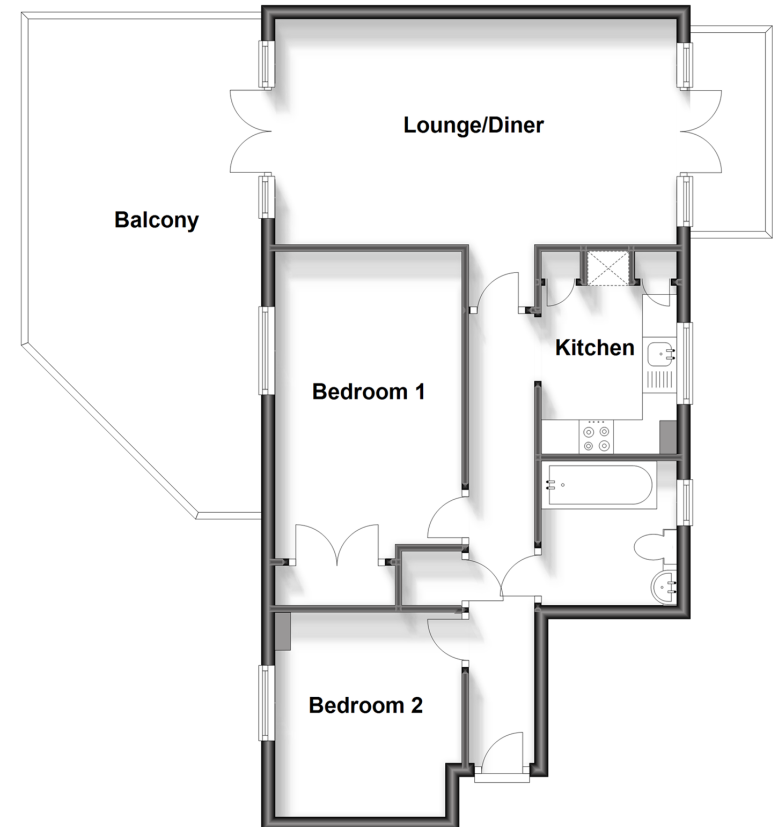
Decking Area

Allocated Parking Space

Communal Gardens

### Ground Floor

Approx. 61.1 sq. metres (658.0 sq. feet)



**Call Larkfield - 01732 847877 ■ [wardsof Kent.co.uk](http://wardsof Kent.co.uk)**

- Legal advice should be taken to verify fixtures/fittings, planning, alterations and/or lease details
- Appliances & services are untested, dimensions are approximate and floor plans are not to scale
- Through a Homewise Home For Life Plan people aged 60+ can secure this property for up to 59% less, by purchasing a Lifetime Lease.



12934703/20230823/CK/RT