

OVER 60?

Secure this property
for up to **59% less!**



Price

£1,000,000

Freehold

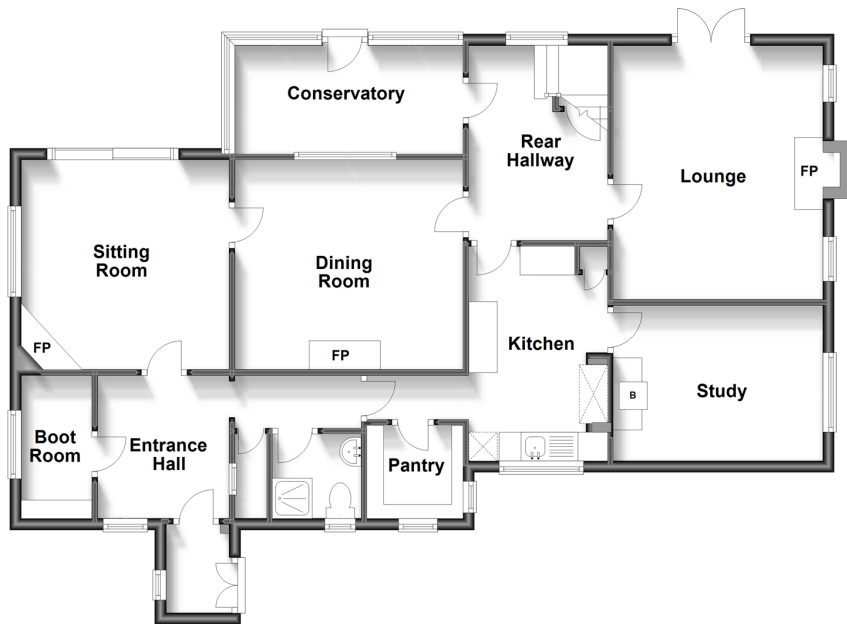
3x  2x  4x 

Kingswood Road, Aylesford, Kent, ME20

Wards
Helping you move forwards

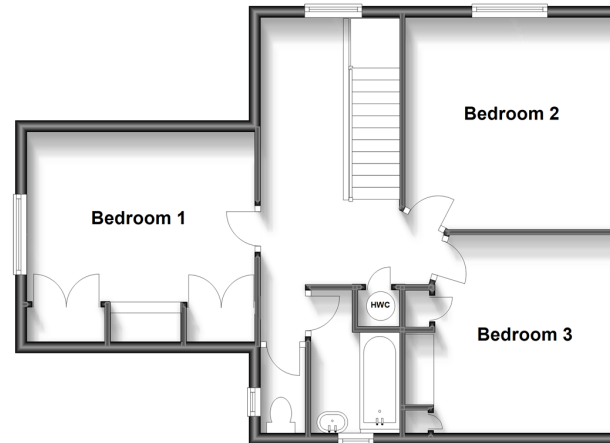
Split Level Ground Floor

Approx. 103.0 sq. metres (1108.7 sq. feet)



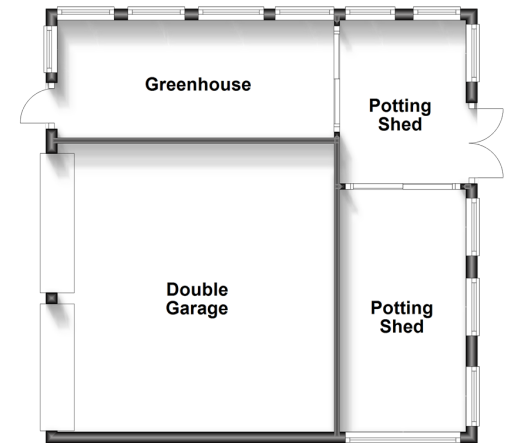
First Floor

Approx. 59.8 sq. metres (643.4 sq. feet)



Outbuilding

Approx. 51.3 sq. metres (552.6 sq. feet)



Accommodation

SPLIT LEVEL GROUND FLOOR

Entrance Porch
Entrance Hall
Boot Room
Sitting Room: 12'0 x 11'11 (3.66m x 3.63m)
Dining Room: 13'1 x 11'6 (3.99m x 3.51m)
Conservatory: 13'2 x 5'8 (4.02m x 1.73m)
Rear Hallway
Lounge: 14'5 x 12'2 (4.40m x 3.71m)
Kitchen: 12'1 x 8'0 (3.69m x 2.44m)
Study: 12'0 x 8'8 (3.66m x 2.64m)
Pantry
Shower Room

FIRST FLOOR

Landing
Bedroom 1: 13'0 x 11'6 (3.97m x 3.51m)
Bedroom 2: 12'1 x 12'1 (3.69m x 3.69m)
Bedroom 3: 11'1 x 10'10 (3.38m x 3.30m)
Bathroom
Separate Toilet

OUTSIDE

Driveway
Wraparound Gardens 3.87 acres
Double Garage/Outbuilding



Main features

- Unique home with 3.87 acres of gardens
- Set in a quiet & beautiful woodland setting known as Kits Coty
- Positioned on the Southern slope of the North Downs with wonderful panoramic views
- Although tucked away you have easy access to the M2 & M20 motorways, Maidstone & Rochester
- Chain free - making buying this home easier



Nearest Schools

Primary Schools: Tunbury Primary 0.8 miles, Burham C of E Primary 0.9 miles, St Mark's C of E Primary, Eccles 1.1 miles. Secondary Schools: Greenacre School 1.7 miles, Walderslade Girls' School 1.8 miles, Bradfields School 2.0 miles



Transport Information

Train Stations: New Hythe 2.3 miles, Snodland 2.3 miles, Aylesford 2.5 miles



Address

Kingswood Road, Aylesford, Kent, ME20



Directions

For directions to this property please contact us.



Call Larkfield Branch 01732 847877 ■ wardsofkent.co.uk



- If buying to let, the energy rating will need to be improved to at least 'E' rating before you can let the property
- Appliances & services are untested, dimensions are approximate and floor plans are not to scale

- Legal advice should be taken to verify fixtures/fittings, planning, alterations and/or lease details
- Through a Homewise Home For Life Plan people aged 60+ can secure this property for up to 59% less, by purchasing a Lifetime Lease.



12934731/20230713/CK/RT