



Price
£290,000

Freehold

2x  1x  1x 

**Ditton Place, Ditton,
Aylesford, Kent, ME20**

OVER 60?

Secure this property
for up to **59% less!**

Wards
Helping you move forwards



Main features

- No parking worries with allocated parking for your convenience
- Both bedrooms are doubles - no box room to worry about
- The lovely & bright conservatory adds an extra dimension to the home
- Set in a quiet & sought after Close
- Excellent schools, shops & commuter links within easy reach

Accommodation

GROUND FLOOR

Entrance Hall

Kitchen: 8'6 x 8'2 (2.59m x 2.49m)

Lounge: 13'7 x 11'6 (4.14m x 3.51m)

Conservatory: 11'10 x 9'10 (3.61m x 3.00m)

FIRST FLOOR

Landing

Bedroom 1: 11'6 x 8'0 (3.51m x 2.44m)

Bedroom 2: 9'4 x 8'5 (2.85m x 2.57m)

Bathroom

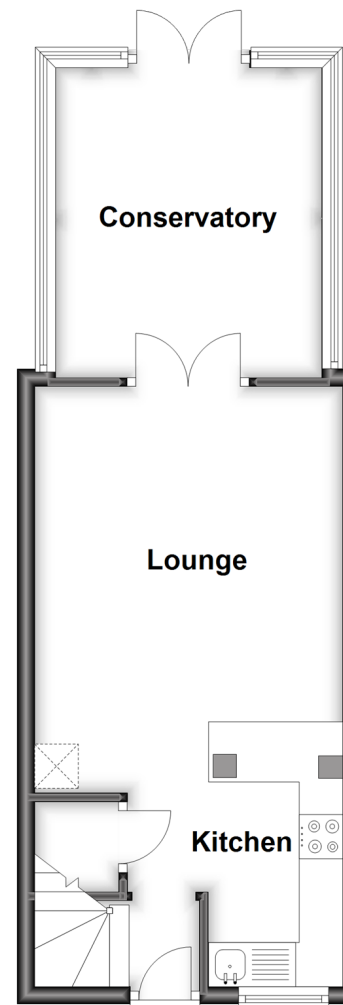
OUTSIDE

Front & Rear Gardens

Allocated Parking

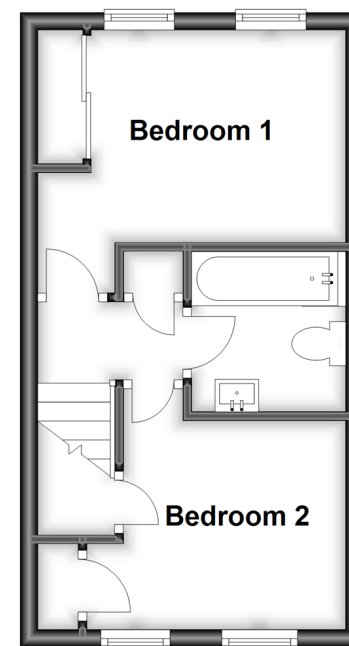
Ground Floor

Approx. 35.1 sq. metres (377.6 sq. feet)



First Floor

Approx. 24.0 sq. metres (258.8 sq. feet)



Call Larkfield - 01732 847877 ■ wardsof Kent.co.uk

- Legal advice should be taken to verify fixtures/fittings, planning, alterations and/or lease details
- Appliances & services are untested, dimensions are approximate and floor plans are not to scale
- Through a Homewise Home For Life Plan people aged 60+ can secure this property for up to 59% less, by purchasing a Lifetime Lease.



12934775/20230518/JT/JT