



Price
£525,000

Freehold

4x  2x  1x 

**London Road, Ditton,
Aylesford, Kent, ME20**

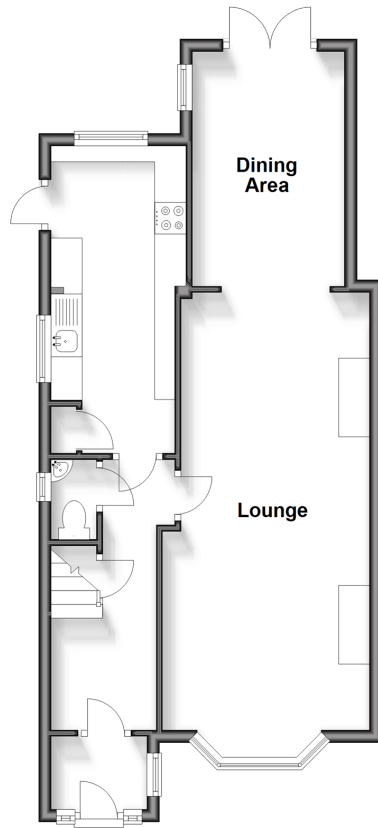
OVER 60?

Secure this property
for up to **59% less!**

Wards
Helping you move forwards

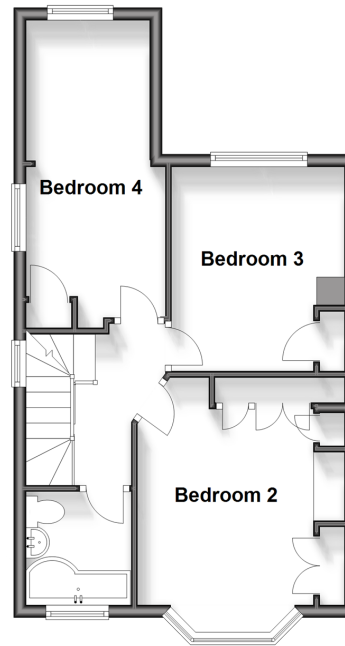
Ground Floor

Approx. 52.7 sq. metres (567.2 sq. feet)



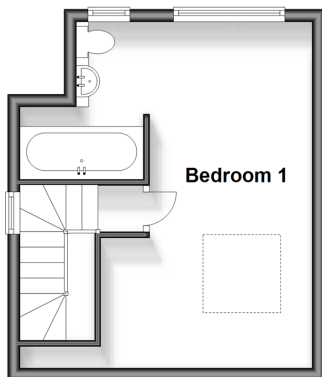
First Floor

Approx. 41.1 sq. metres (442.9 sq. feet)



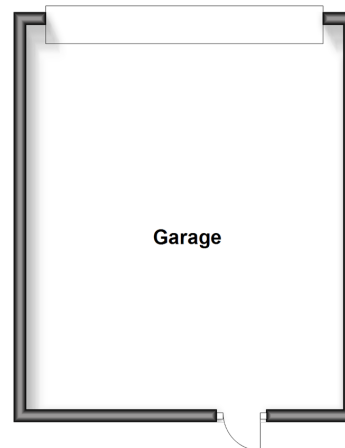
Second Floor

Approx. 24.8 sq. metres (266.8 sq. feet)



Outbuilding

Approx. 31.2 sq. metres (336.3 sq. feet)



Accommodation

GROUND FLOOR

Entrance Porch

Entrance Hall

Separate Toilet

Kitchen: 15'10 x 6'4 (4.83m x 1.93m)

Lounge: 25'0 x 10'0 (7.63m x 3.05m)

Dining Area: 12'1 x 8'0 (3.69m x 2.44m)

FIRST FLOOR

Landing

Bedroom 2: 14'0 x 9'11 (4.27m x 3.02m)

Bedroom 3: 10'11 x 9'2 (3.33m x 2.80m)

Bedroom 4: 16'9 x 3'10 (5.11m x 1.17m)

Bathroom

SECOND FLOOR

Landing

Bedroom 1: 12'9 x 10'10 (3.89m x 3.30m)

En-Suite Bathroom

OUTBUILDING

Garage

OUTSIDE

Front & Rear Gardens

Driveway



Main features

- Extended & well presented throughout
- Huge lounge & dining area - ideal for bringing the family together & entertaining
- Handy ground floor separate toilet
- Useful double garage to the rear of the property
- Lovely long garden to enjoy - perfect for children to play safely & keen gardeners



Nearest Schools

Primary Schools: Aylesford Primary 0.3 miles, Ditton C of E Junior School 0.8 miles, St James the Great Primary and Nursery School 1.4 miles. Secondary Schools: Aylesford School 0.3 miles, The Malling School 1.9 miles, St Augustine Academy 2.2 miles



Transport Information

Train Stations: Barming 1.3 miles, East Malling 2.3 miles, Maidstone Barracks 2.4 miles



Address

London Road, Ditton, Aylesford, Kent, ME20



Directions

For directions to this property please contact us.



Wards
Helping you move forwards

Call Larkfield Branch 01732 847877 ■ wardsofkent.co.uk



■ Legal advice should be taken to verify fixtures/fittings, planning, alterations and/or lease details ■ Appliances & services are untested, dimensions are approximate and floor plans are not to scale
■ Through a Homewise Home For Life Plan people aged 60+ can secure this property for up to 59% less, by purchasing a Lifetime Lease.



12934785/20240325/CK/JT