



OVER 60?

Secure this property
for up to **59% less!**

Price

£500,000

Freehold

4x  2x  2x 

**Scott Close, Ditton,
Aylesford, Kent, ME20**

Wards
Helping you move forwards



Main features

- Forget those chain worries - this property is chain free
- Work from home with ease in the study saving the cost of commuting
- Handy ground floor shower room
- Relax & soak up the sun in the sunny & secluded garden
- Short walk to good schools & great commuter links by road/rail

Accommodation

GROUND FLOOR

Entrance Porch
 Lounge: 16'0 x 13'3 (4.88m x 4.04m)
 Study: 10'3 x 8'5 (3.13m x 2.57m)
 Shower Room
 Dining Area: 13'5 x 11'7 (4.09m x 3.53m)
 Kitchen: 18'7 x 9'11 (5.67m x 3.02m)
 Utility Room: 10'1 x 4'3 (3.08m x 1.30m)

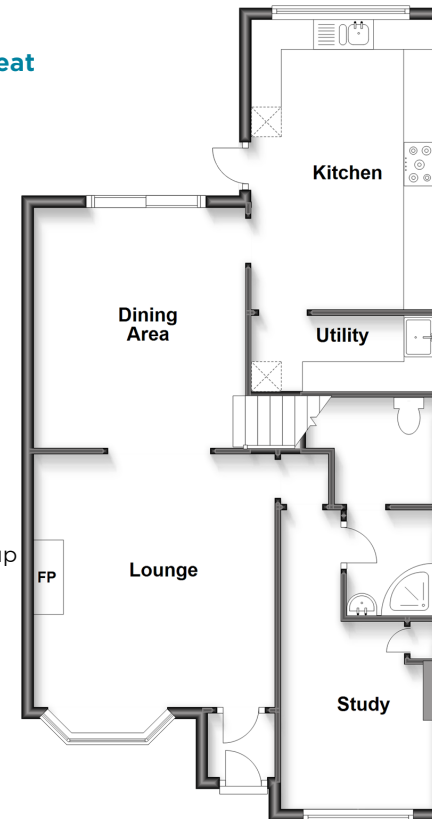
FIRST FLOOR

Landing
 Bedroom 1: 11'5 up to fitted wardrobes x 8'0 up to door well (3.48m x 2.44m)
 Bedroom 2: 12'3 x 9'6 (3.74m x 2.90m)
 Bedroom 3: 11'0 x 8'3 (3.36m x 2.52m)
 Bedroom 4: 9'6 x 7'11 (2.90m x 2.41m)
 Bathroom

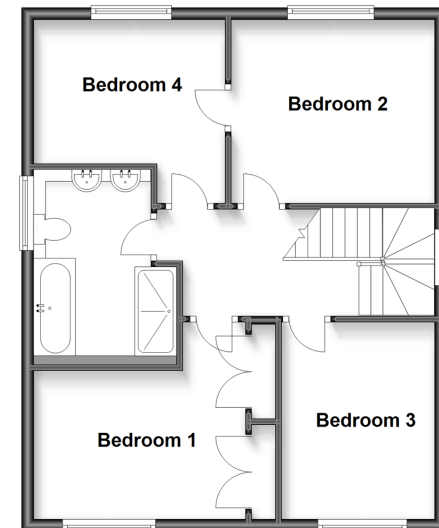
OUTSIDE

Driveway
 Rear Garden
 Summerhouse With Electrics
 Shed

Ground Floor
 Approx. 72.0 sq. metres (774.9 sq. feet)



First Floor
 Approx. 56.3 sq. metres (605.6 sq. feet)



Call Larkfield - 01732 847877 ■ wardsofkent.co.uk

- Legal advice should be taken to verify fixtures/fittings, planning, alterations and/or lease details
- Appliances & services are untested, dimensions are approximate and floor plans are not to scale
- Through a Homewise Home For Life Plan people aged 60+ can secure this property for up to 59% less, by purchasing a Lifetime Lease.



12934791/20230817/CK/JT