



Price

£420,000

Freehold

3x  1x  1x 

**Harvest Ridge,
Leybourne, Kent, ME19**

OVER 60?

Secure this property
for up to **59% less!**

Wards
Helping you move forwards



Main features

- Beautifully presented - just add your own furniture
- All bedrooms are a good size - no box room here
- Lovely quiet cul-de-sac location
- Private sunny garden with patio for enjoying the outdoors
- Easy commuter connections & good schools close by

Accommodation

GROUND FLOOR

Entrance Porch

Lounge: 15'9 x 10'5 (4.80m x 3.18m)

Dining Area: 9'0 x 8'6 (2.75m x 2.59m)

Kitchen: 9'9 x 8'5 (2.97m x 2.57m)

FIRST FLOOR

Landing

Bedroom 1: 14'2 x 9'7 (4.32m x 2.92m)

Bedroom 2: 10'4 x 9'6 (3.15m x 2.90m)

Bedroom 3: 9'3 x 8'10 (2.82m x 2.69m)

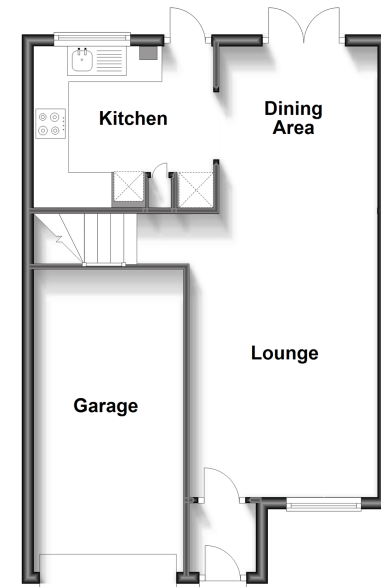
Bathroom

OUTSIDE

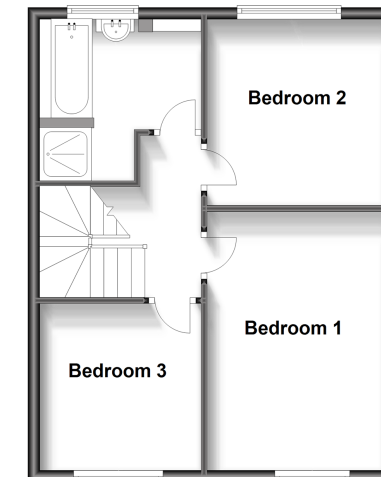
Driveway & Garage

Front & Rear Gardens

Ground Floor
Approx. 49.4 sq. metres (531.5 sq. feet)



First Floor
Approx. 44.6 sq. metres (480.2 sq. feet)



Call Larkfield - 01732 847877 ■ wardsof Kent.co.uk

- Legal advice should be taken to verify fixtures/fittings, planning, alterations and/or lease details
- Appliances & services are untested, dimensions are approximate and floor plans are not to scale
- Through a Homewise Home For Life Plan people aged 60+ can secure this property for up to 59% less, by purchasing a Lifetime Lease.



12934794/20230725/RT/RT