



OVER 60?

Secure this property
for up to **59% less!**

Price

£340,000

Freehold

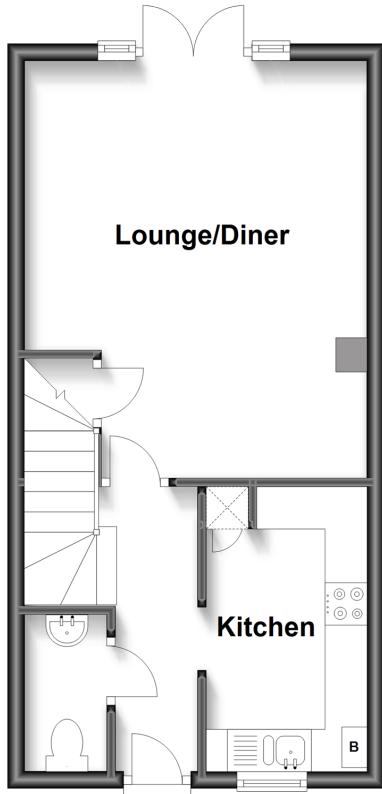
3x  2x  1x 

**Brampton Field, Ditton,
Aylesford, Kent, ME20**

Wards
Helping you move forwards

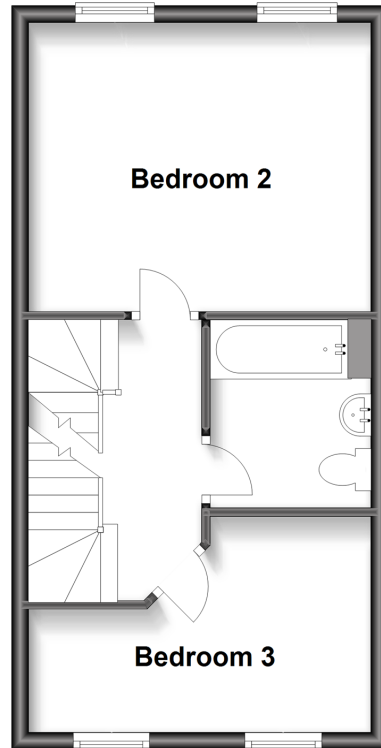
Ground Floor

Approx. 34.3 sq. metres (369.1 sq. feet)



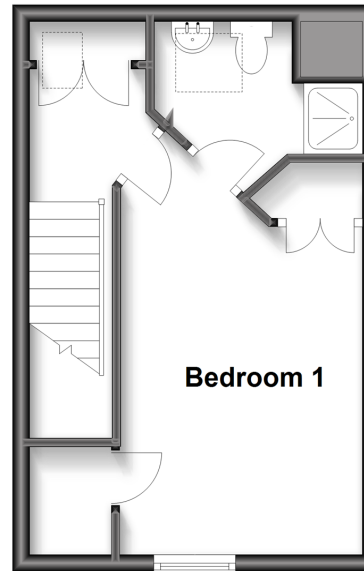
First Floor

Approx. 34.3 sq. metres (369.1 sq. feet)



Second Floor

Approx. 25.0 sq. metres (269.2 sq. feet)



Accommodation

GROUND FLOOR

Entrance Hall

Cloakroom

Kitchen: 10'11 x 6'4 (3.33m x 1.93m)

Lounge/Diner: 15'10 x 13'5 (4.83m x 4.09m)

FIRST FLOOR

Landing

Bedroom 2: 13'5 x 11'0 (4.09m x 3.36m)

Bedroom 3: 13'5 x 8'3 (4.09m x 2.52m)

Bathroom

SECOND FLOOR

Landing

Bedroom 1: 11'10 x 9'11 (3.61m x 3.02m)

En-Suite Shower Room

OUTSIDE

Rear Garden

Garage En-Bloc

Allocated Parking



Main features

- No forward chain to worry about
- Forget those parking worries as you have allocated parking
- Handy garage to the rear of the property for your convenience
- An en-suite shower room adds a touch of luxury to the home
- Fantastic flexibility in how you choose to use the rooms to suit your needs



Nearest Schools

Primary Schools: Ditton C of E Junior School 0.2 miles, Aylesford Primary 1.1 miles, Leybourne, St Peter and St Paul C of E Voluntary Aided Primary 1.2 miles. Secondary Schools: Aylesford School 1.1 miles, The Malling School 1.8 miles, The Maplesden Noakes School 2.7 miles



Transport Information

Train Stations: Aylesford 0.9 miles, West Malling 1.5 miles, Barming 2.2 miles, East Malling 2.2 miles



Address

Brampton Field, Ditton, Aylesford, Kent, ME20



Directions

For directions to this property please contact us.



Wards
Helping you move forwards

Call Larkfield Branch 01732 847877 ■ wardsofkent.co.uk



- Legal advice should be taken to verify fixtures/fittings, planning, alterations and/or lease details
- Appliances & services are untested, dimensions are approximate and floor plans are not to scale
- Through a Homewise Home For Life Plan people aged 60+ can secure this property for up to 59% less, by purchasing a Lifetime Lease.



12934801/20230619/AM/JT