



Guide Price
£290,000

Freehold

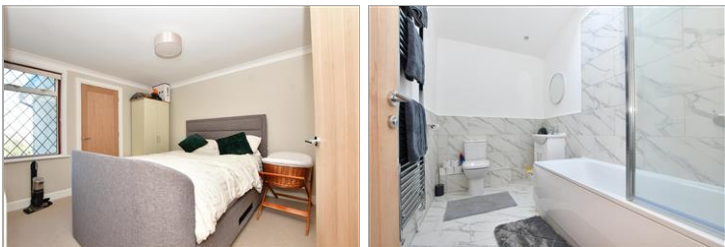
3x  1x  1x 

**Rochester Road,
Burham, Rochester,
Kent, ME1**

OVER 60?

Secure this property
for up to **59% less!**

Wards
Helping you move forwards



Main features

- Well presented Victorian home set in a popular village location
- Bedroom 3 is accessed via bedroom 2 - ideal for a nursery or study
- Enjoy the outdoors in the lovely long garden
- Great position for access to both the M2 and M20 motorways
- Scenic country walks from your door

Accommodation

GROUND FLOOR

Lounge: 15'10 x 11'2 (4.83m x 3.41m)
 Kitchen/Diner: 11'6 x 11'1 (3.51m x 3.38m)
 Utility: 9'2 x 6'4 (2.80m x 1.93m)
 Bathroom
 Lean To

FIRST FLOOR

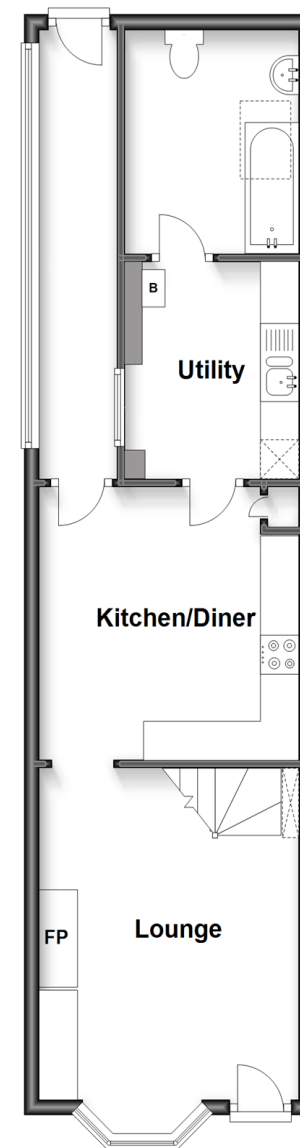
Landing
 Bedroom 1: 11'6 x 11'1 (3.51m x 3.38m)
 Bedroom 2: 11'1 x 10'10 (3.38m x 3.30m)
 Bedroom 3: 9'0 x 6'4 (2.75m x 1.93m)

OUTSIDE

Front & Rear Gardens

Ground Floor

Approx. 46.6 sq. metres (501.9 sq. feet)



First Floor

Approx. 33.3 sq. metres (358.5 sq. feet)



Call Larkfield - 01732 847877 ■ wardsof Kent.co.uk

- Legal advice should be taken to verify fixtures/fittings, planning, alterations and/or lease details
- Appliances & services are untested, dimensions are approximate and floor plans are not to scale
- Through a Homewise Home For Life Plan people aged 60+ can secure this property for up to 59% less, by purchasing a Lifetime Lease.



12934805/20230725/JT/JT