



Price

£225,000

2x  2x  1x 

Hillberry Park, Wateringbury Road, East
Malling, Kent, ME19

Wards
Helping you move forwards



Main features

- **Exclusive park home community for the over 50's & pets are allowed**
- **Luxury en-suite shower room & a bathroom to enjoy**
- **Attractive & sociable kitchen/living area - ideal for todays lifestyle**
- **A utility room adds convenience**
- **Lovely private garden - landscaped for low maintenance with gazebo**

Accommodation

GROUND FLOOR

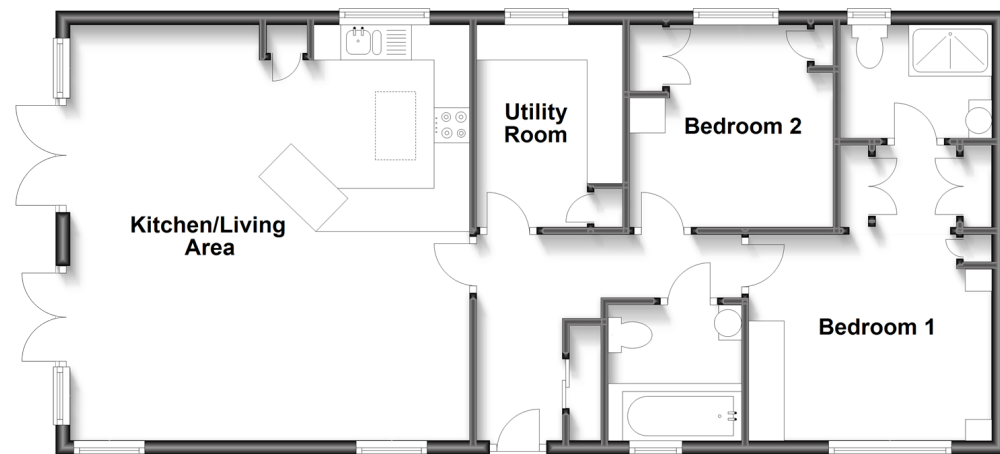
Entrance Hall
 Kitchen/Living Area: 19'4 x 18'6 (5.90m x 5.64m)
 Utility Room: 9'5 x 6'9 (2.87m x 2.06m)
 Bedroom 1: 11'3 x 9'5 (3.43m x 2.87m)
 Dressing Area
 En-Suite Shower Room
 Bedroom 2: 9'5 x 9'5 (2.87m x 2.87m)
 Bathroom

OUTSIDE

Front & Side Decking Area
 Side & Rear Gardens
 Shed
 Communal Parking

Ground Floor

Approx. 76.9 sq. metres (827.6 sq. feet)



Call Larkfield - 01732 847877 ■ wardsofkent.co.uk

- If buying to let, the energy rating will need to be improved to at least 'E' rating before you can let the property
- Appliances & services are untested, dimensions are approximate and floor plans are not to scale

■ Legal advice should be taken to verify fixtures/fittings, planning, alterations and/or lease details



12934822/20230425/CK/RT