



Price
£225,000

2x  2x  1x 

**Heath Park, The Heath,
East Malling, Kent, ME19**

Wards
Helping you move forwards



Main features

- Exclusive over 50's park home community
- Stunning kitchen/living area - ideal for today's lifestyle
- An en-suite shower room & bathroom adds a touch of luxury
- Beautifully presented with decking area & manageable garden to enjoy
- Lovely setting with surrounding countryside

Accommodation

GROUND FLOOR

Entrance Hall

Kitchen/Living Area: 19'6 (5.95m) narrowing to 18'2 (5.54m) x 18'9 (5.72m)

Utility Room: 9'1 x 5'5 (2.77m x 1.65m)

Bedroom 1: 10'10 x 9'2 (3.30m x 2.80m)

Dressing Area

En-Suite Shower Room

Bedroom 2: 9'7 x 9'1 (2.92m x 2.77m)

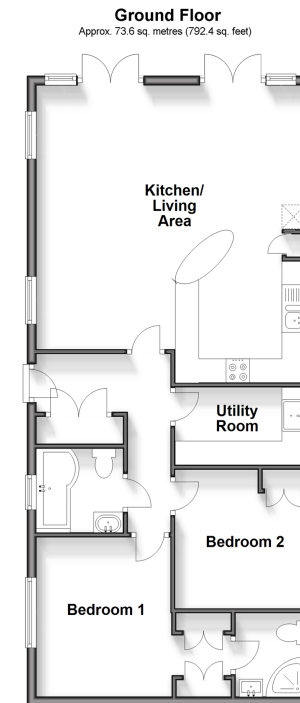
Bathroom

OUTSIDE

Decking Area to Front & Side

Rear Garden

Communal Parking



Call Larkfield - 01732 847877 ■ wardsofkent.co.uk

■ If buying to let, the energy rating will need to be improved to at least 'E' rating before you can let the property

■ Appliances & services are untested, dimensions are approximate and floor plans are not to scale

■ Legal advice should be taken to verify fixtures/fittings, planning, alterations and/or lease details



12934825/20240513/CK/RT