

OVER 60?

Secure this property
for up to **59% less!**



Price

£550,000

Freehold

4x  2x  2x 

Hayfield, Leybourne, West Malling, Kent,
ME19

Wards
Helping you move forwards



Main features

- Beautifully presented throughout
- Breathtaking bathroom & an en-suite shower room adds to the luxury
- The lounge has a striking media wall that's ideal for home entertainment
- Work from home with ease in the study - save the stress of a commute
- Relax in the sunny seclusion of the garden with a summerhouse to enjoy

Accommodation

GROUND FLOOR

Hallway

Study: 9'7 x 7'2 (2.92m x 2.19m)

Utility Room: 7'7 (2.31m) narrowing to 4'9 (1.45m) x 6'2 (1.88m)

Cloakroom

Kitchen: 11'1 x 8'1 (3.38m x 2.47m)

Lounge: 17'4 x 11'1 (5.29m x 3.38m)

Dining Area: 11'1 x 8'4 (3.38m x 2.54m)

FIRST FLOOR

Bedroom 1: 12'11 x 11'8 (3.94m x 3.56m)

En-Suite Shower Room

Bedroom 2: 11'5 x 6'10 (3.48m x 2.08m)

Bedroom 3: 9'6 x 8'4 (2.90m x 2.54m)

Bedroom 4: 11'5 x 7'0 (3.48m x 2.14m)

Bathroom

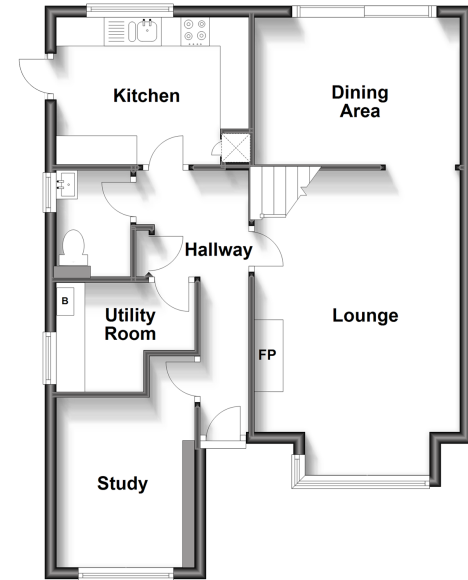
OUTSIDE

Front & Rear Gardens

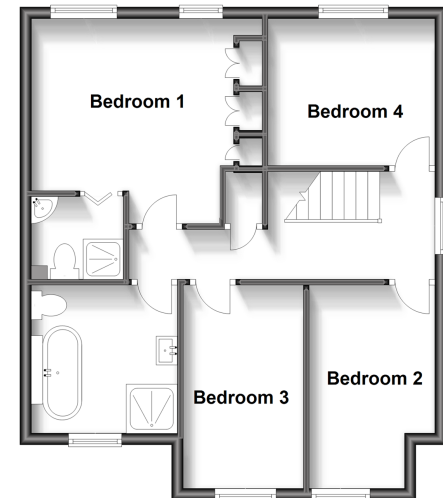
Driveway & Detached Garage

Summerhouse With Light & Power

Ground Floor
Approx. 58.3 sq. metres (627.2 sq. feet)



First Floor
Approx. 54.7 sq. metres (588.4 sq. feet)



Call Larkfield - 01732 847877 ■ wardsofkent.co.uk

- Legal advice should be taken to verify fixtures/fittings, planning, alterations and/or lease details
- Appliances & services are untested, dimensions are approximate and floor plans are not to scale
- Through a Homewise Home For Life Plan people aged 60+ can secure this property for up to 59% less, by purchasing a Lifetime Lease.



12934871/20230818/HJ20/RT