



Price
£350,000

Freehold

3x  1x  1x 

**Willowmead,
Leybourne, West
Malling, Kent, ME19**

OVER 60?

Secure this property
for up to **59% less!**

Wards
Helping you move forwards



Main features

- Tucked away location at the end of a quiet Close
- The bright conservatory adds an extra dimension to the home
- Garden shed with power & insulation - currently used as an office
- Sunny & private rear garden to enjoy
- Well reputed Leybourne Primary School within walking distance

Accommodation

GROUND FLOOR

Entrance Porch
Cloakroom
Lounge : 15'9 including stairs (4.80m) narrowing to 12'7 up to stairs (3.84m) x 12'8 (3.86m)
Dining Area: 9'6 x 7'8 (2.90m x 2.34m)
Kitchen: 9'5 x 7'7 (2.87m x 2.31m)
Conservatory: 8'9 x 8'0 (2.67m x 2.44m)

FIRST FLOOR

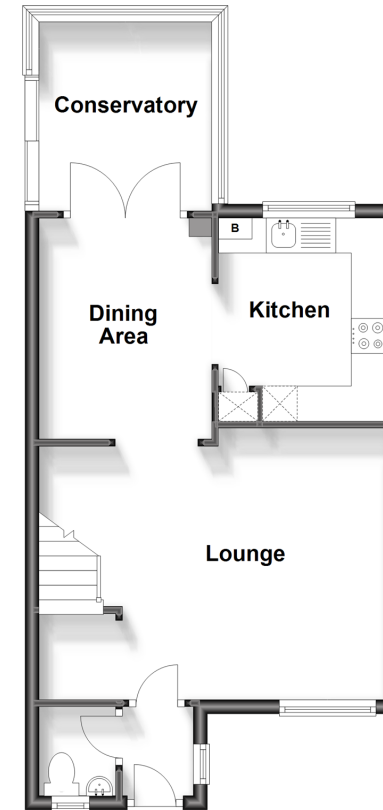
Landing
Bedroom 1: 12'9 x 9'2 (3.89m x 2.80m)
Bedroom 2: 9'5 (2.87m) x 9'2 (2.80m) narrowing to 8'5 (2.57m)
Bedroom 3: 10'8 into fitted cupboard x 7'0 (3.25m x 2.14m)
Bathroom

OUTSIDE

Driveway
Front & Rear Gardens
Shed With Power & Insulation

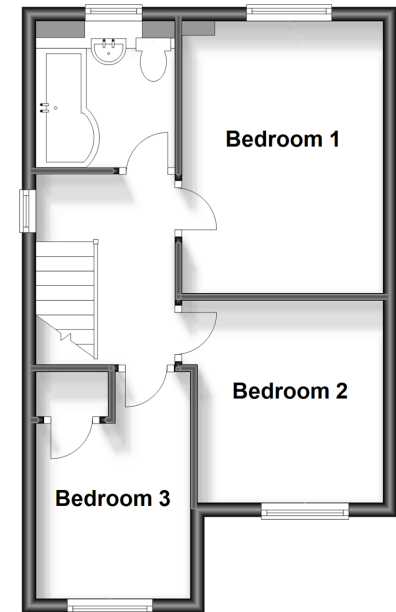
Ground Floor

Approx. 464.0 sq. feet



First Floor

Approx. 394.3 sq. feet



Call Larkfield - 01732 847877 ■ wardsof Kent.co.uk

- Legal advice should be taken to verify fixtures/fittings, planning, alterations and/or lease details
- Appliances & services are untested, dimensions are approximate and floor plans are not to scale
- Through a Homewise Home For Life Plan people aged 60+ can secure this property for up to 59% less, by purchasing a Lifetime Lease.



12934880/20230911/HJ20/RT