

**OVER 60?**

Secure this property  
for up to **59% less!**



**Price**

**£225,000**

**Leasehold**

2x  2x  1x 

The Lakes, Larkfield, Kent, ME20

*Wards*  
Helping you move forwards





## Main features

- **Well presented 2nd floor apartment**
- **No forward chain to worry about**
- **Secure allocated parking space for your convenience**
- **Relax on the lovely decked balcony**
- **Fantastic location to live with good commuter links & amenities close by**

## Accommodation

### SECOND FLOOR

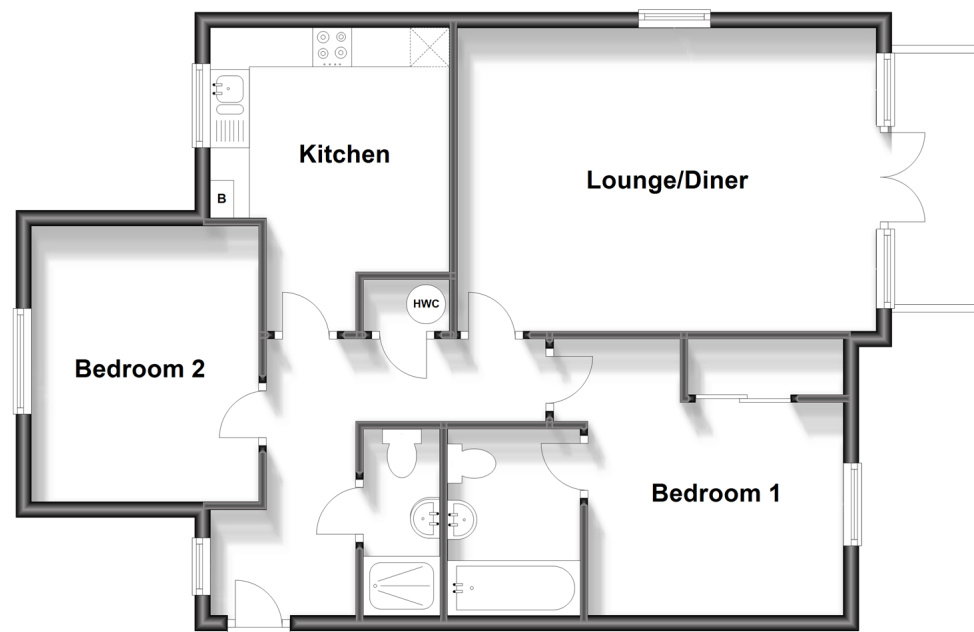
Entrance Hall  
 Kitchen: 12'7 x 9'10 (3.84m x 3.00m)  
 Lounge/Diner: 18'4 x 12'8 (5.59m x 3.86m)  
 Balcony  
 Bedroom 1: 11'7 x 10'9 (3.53m x 3.28m)  
 En-Suite Bathroom  
 Bedroom 2: 11'4 x 9'6 (3.46m x 2.90m)  
 Shower Room

### OUTSIDE

Secure Allocated Parking Space

### Second Floor

Approx. 70.1 sq. metres (754.7 sq. feet)



**Call Larkfield - 01732 847877 ■ [wardsofkent.co.uk](http://wardsofkent.co.uk)**

■ Legal advice should be taken to verify fixtures/fittings, planning, alterations and/or lease details  
 ■ Through a Homewise Home For Life Plan people aged 60+ can secure this property for up to 59% less, by purchasing a Lifetime Lease.

■ Appliances & services are untested, dimensions are approximate and floor plans are not to scale



12934892/20230808/JT/JT