



OVER 60?

Secure this property
for up to **59% less!**

Price

£280,000

Freehold

2x  1x  2x 

**Bell Lane, Ditton,
Aylesford, Kent, ME20**

Wards
Helping you move forwards

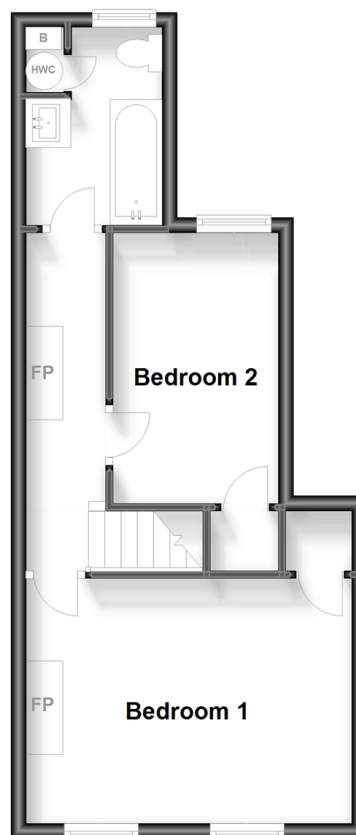
Ground Floor

Approx. 41.3 sq. metres (444.5 sq. feet)



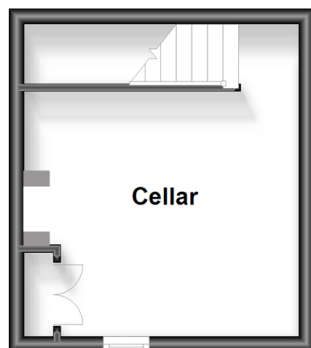
First Floor

Approx. 36.2 sq. metres (390.1 sq. feet)



Basement

Approx. 15.6 sq. metres (167.8 sq. feet)



Accommodation

GROUND FLOOR

Entrance Porch

Lounge: 10'9 x 10'9 (3.28m x 3.28m)

Dining Room: 11'10 x 10'8 (3.61m x 3.25m)

Kitchen: 17'1 x 6'7 (5.21m x 2.01m)

BASEMENT

Cellar: 10'4 x 10'1 (3.15m x 3.08m)

FIRST FLOOR

Landing

Bedroom 1: 14'5 x 10'9 (4.40m x 3.28m)

Bedroom 2: 12'0 x 7'5 (3.66m x 2.26m)

Bathroom

OUTSIDE

Front & Rear Gardens

Shed



Main features

- Well presented Victorian home - full of character
- Good size bedrooms - no box rooms to worry about
- Useful basement that adds to the living space & offers flexibility to suit you - perfect for working from home
- Soak up the sun in the lovely long garden
- Fantastic location to live - close to schools, shops & commuter links



Nearest Schools

Primary Schools: Ditton C of E Junior School 0.5 miles, Brookfield Junior School 0.8 miles, Lunsford Primary 0.8 miles. Secondary Schools: Aylesford School 1.0 miles, The Malling School 1.2 miles, Grange Park School 2.9 miles



Transport Information

Train Stations: East Malling 1.6 miles, Barming 1.6 miles, New Hythe 1.8 miles



Address

Bell Lane, Ditton, Aylesford, Kent, ME20



Directions

For directions to this property please contact us.



Wards
Helping you move forwards

Call Larkfield Branch 01732 847877 ■ wardsofkent.co.uk



■ Legal advice should be taken to verify fixtures/fittings, planning, alterations and/or lease details ■ Appliances & services are untested, dimensions are approximate and floor plans are not to scale
■ Through a Homewise Home For Life Plan people aged 60+ can secure this property for up to 59% less, by purchasing a Lifetime Lease.



12934896/20230915/JT/JT