



**Price**  
**£400,000**

**Freehold**

4x  2x  1x 

**Eccles Close, Aylesford,  
Kent, ME20**

**OVER 60?**

Secure this property  
for up to **59% less!**

*Wards*  
Helping you move forwards

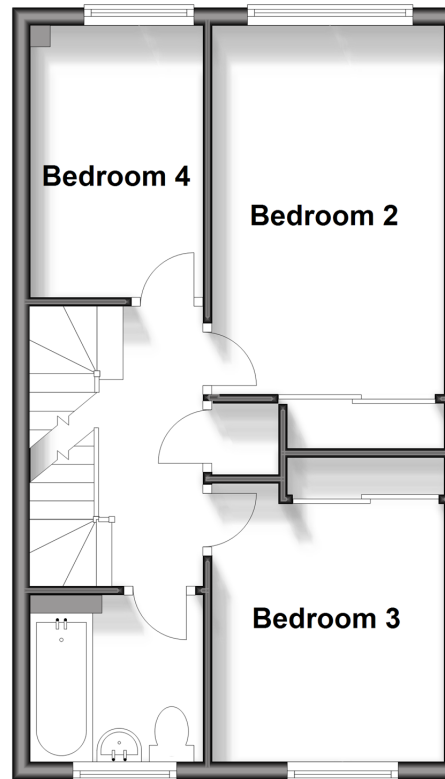
## Ground Floor

Approx. 38.0 sq. metres (408.7 sq. feet)



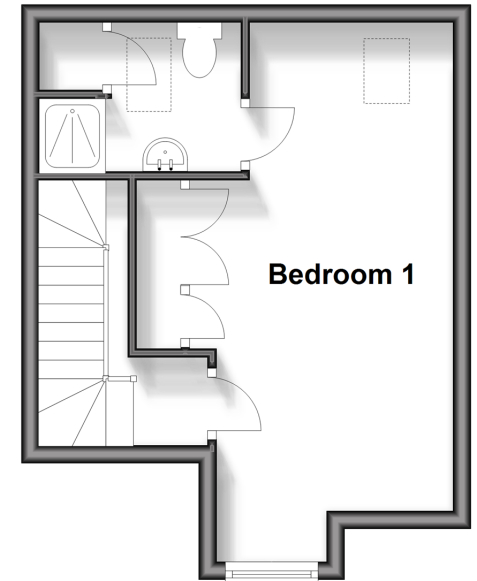
## First Floor

Approx. 38.1 sq. metres (410.0 sq. feet)



## Second Floor

Approx. 24.8 sq. metres (267.4 sq. feet)



## Accommodation

### GROUND FLOOR

Entrance Hall  
Cloakroom  
Kitchen/Diner: 14'3 x 8'2 (4.35m x 2.49m)  
Utility Cupboard  
Lounge: 15'2 x 11'7 (4.63m x 3.53m)

### FIRST FLOOR

Landing  
Bedroom 2: 13'5 x 8'5 (4.09m x 2.57m)  
Bedroom 3: 10'2 x 8'5 (3.10m x 2.57m)  
Bedroom 4: 9'11 x 6'5 (3.02m x 1.96m)  
Bathroom

### SECOND FLOOR

Landing  
Bedroom 1: 19'10 x 9'8 (6.05m x 2.95m)  
En-Suite Shower Room

### OUTSIDE

Allocated Parking  
Front & Rear Gardens





## Main features

- Very well presented throughout
- Enjoy the luxury of both an en-suite shower room & a bathroom
- Handy ground floor cloakroom for your convenience
- Fitted wardrobes to bedrooms 1, 2 & 3 offers you good storage
- Commuting is a breeze with great transport links by road & rail close by



### Nearest Schools

Primary Schools: Aylesford Primary 0.5 miles, St Peter's C of E Primary 0.5 miles, Allington Primary 0.9 miles. Secondary Schools: Aylesford School 0.5 miles, The Maplesden Noakes School 1.7 miles, St Simon Stock Catholic School 1.8 miles



### Transport Information

Train Stations: Aylesford 0.6 miles, Barming 0.8 miles, New Hythe 1.4 miles



### Address

Eccles Close, Aylesford, Kent, ME20



### Directions

For directions to this property please contact us.





**Wards**  
Helping you move forwards

Call Larkfield Branch 01732 847877 ■ [wardsofkent.co.uk](http://wardsofkent.co.uk)



- Legal advice should be taken to verify fixtures/fittings, planning, alterations and/or lease details
- Appliances & services are untested, dimensions are approximate and floor plans are not to scale
- Through a Homewise Home For Life Plan people aged 60+ can secure this property for up to 59% less, by purchasing a Lifetime Lease.



12934935/20240124/CK/JT