



Price
£215,000

1x  2x  1x 

**Heath Park, East Malling,
Kent, ME19**

Wards
Helping you move forwards



Main features

- As large as a 2 bedroom park home but with a spacious dressing room
- Exclusive development for the over 50's with pets allowed
- Stunning kitchen/living area
- Luxury en-suite bathroom & a shower room to enjoy
- Private garden & a wrap around decked area to soak up the sun

Accommodation

GROUND FLOOR

Entrance Hall

Kitchen/Living Area: 22'6 (6.86m) narrowing to 18'7 (5.67m) x 19'5 (5.92m)

Dressing Room: 12'1 into fitted wardrobes x 9'5 into fitted wardrobes (3.69m x 2.87m)

Shower Room: 6'7 x 6'3 (2.01m x 1.91m)

Bedroom: 10'10 x 9'8 (3.30m x 2.95m)

En-Suite Bathroom: 9'5 x 7'5 (2.87m x 2.26m)

OUTSIDE

Front & Side Decking Area

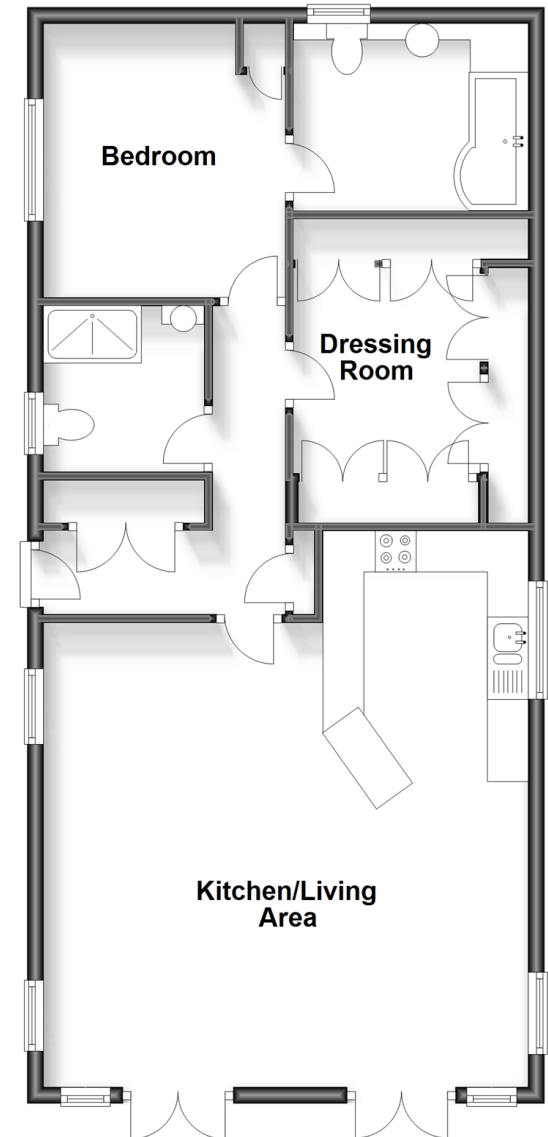
Side & Rear Gardens

2 Sheds

Allocated Parking

Ground Floor

Approx. 76.9 sq. metres (827.7 sq. feet)



Call Larkfield - 01732 847877 ■ wardsofkent.co.uk

- If buying to let, the energy rating will need to be improved to at least 'E' rating before you can let the property
- Legal advice should be taken to verify fixtures/fittings, planning, alterations and/or lease details
- Appliances & services are untested, dimensions are approximate and floor plans are not to scale



12934939/20240116/CK/RT