



**Price**  
**£215,000**

**Leasehold**

2x  2x  1x 

Ingram Close, Larkfield,  
Aylesford, Kent, ME20

**OVER 60?**

Secure this property  
for up to **59% less!**

*Wards*  
Helping you move forwards





## Main features

- Well presented throughout
- Sociable kitchen/lounge/dining area - perfect for today's lifestyle & entertaining
- An en-suite shower room adds a touch of luxury
- Excellent commuter links - walk to rail station & M20 close by
- Fantastic location to live with good amenities & leisure facilities nearby

## Accommodation

### SECOND FLOOR

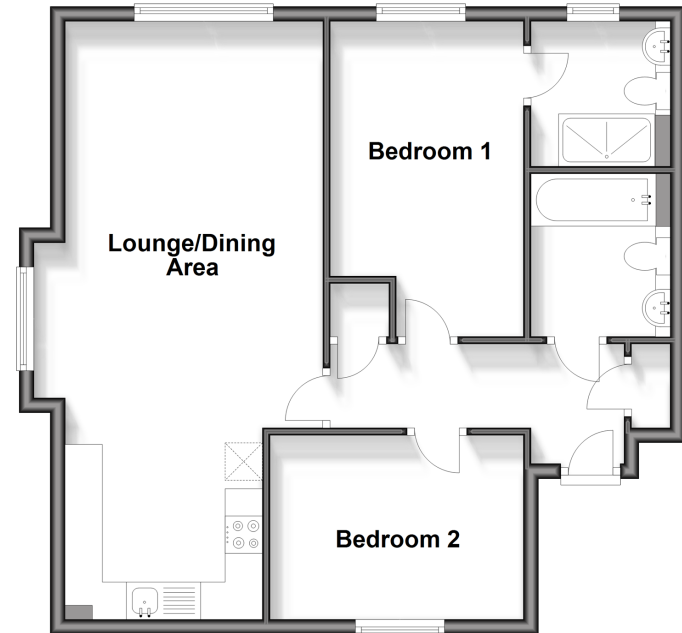
Entrance Hall  
 Lounge/Dining Area: 16'4 x 11'1 (4.98m x 3.38m)  
 Kitchen: 9'2 x 9'2 (2.80m x 2.80m)  
 Bedroom 1: 13'1 x 9'2 (3.99m x 2.80m)  
 En-Suite Shower Room  
 Bedroom 2: 12'9 x 7'10 (3.89m x 2.39m)  
 Bathroom

### OUTSIDE

Allocated Parking  
 Communal Gardens

### Second Floor

Approx. 61.5 sq. metres (661.9 sq. feet)



**Call Larkfield - 01732 847877 ■ wardsofkent.co.uk**

■ Legal advice should be taken to verify fixtures/fittings, planning, alterations and/or lease details  
 ■ Through a Homewise Home For Life Plan people aged 60+ can secure this property for up to 59% less, by purchasing a Lifetime Lease.

■ Appliances & services are untested, dimensions are approximate and floor plans are not to scale



12934969/20240212/CK/JT